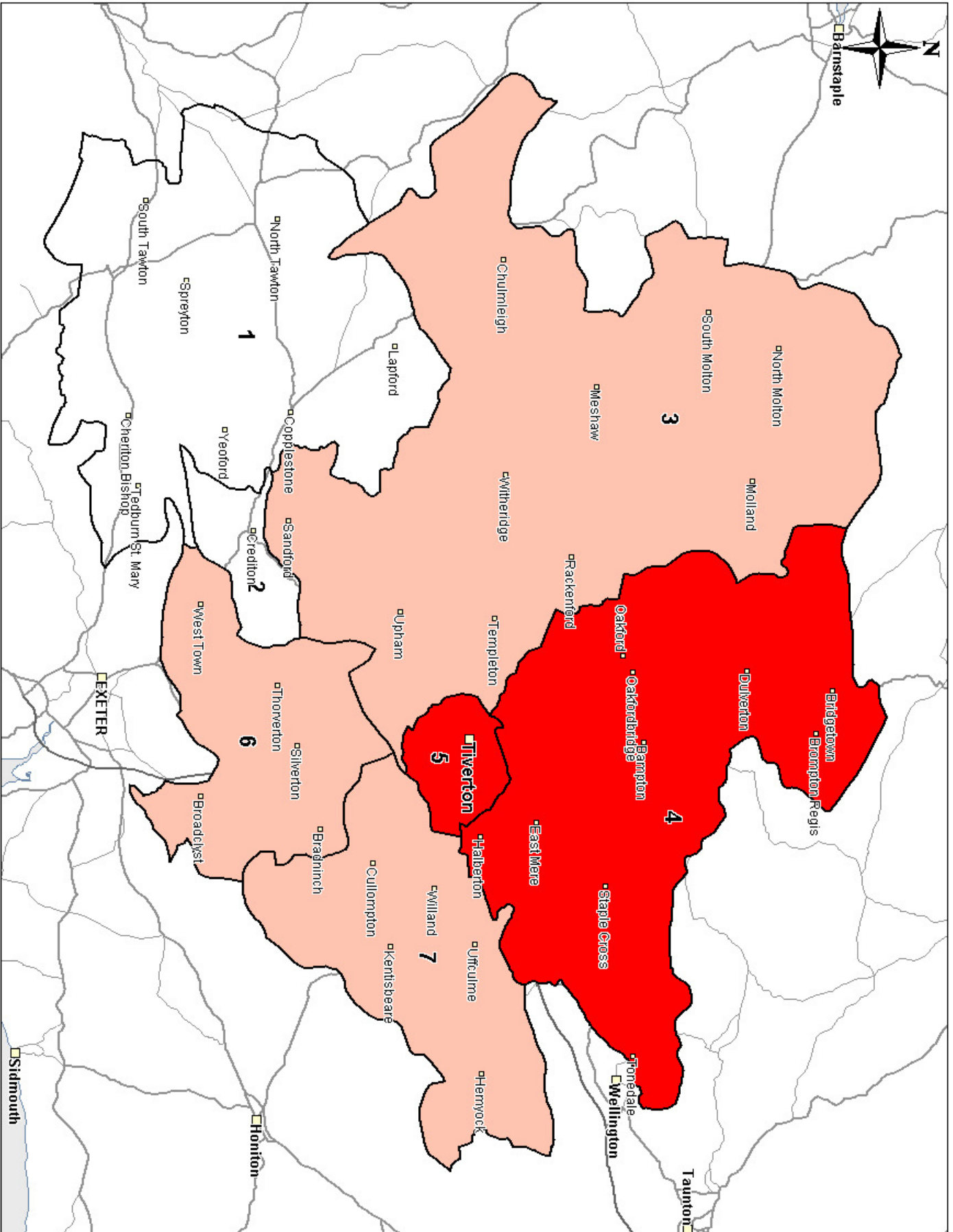


Appendix J:
Shopping Catchment Area Plans for Tiverton, Cullompton
and Crediton

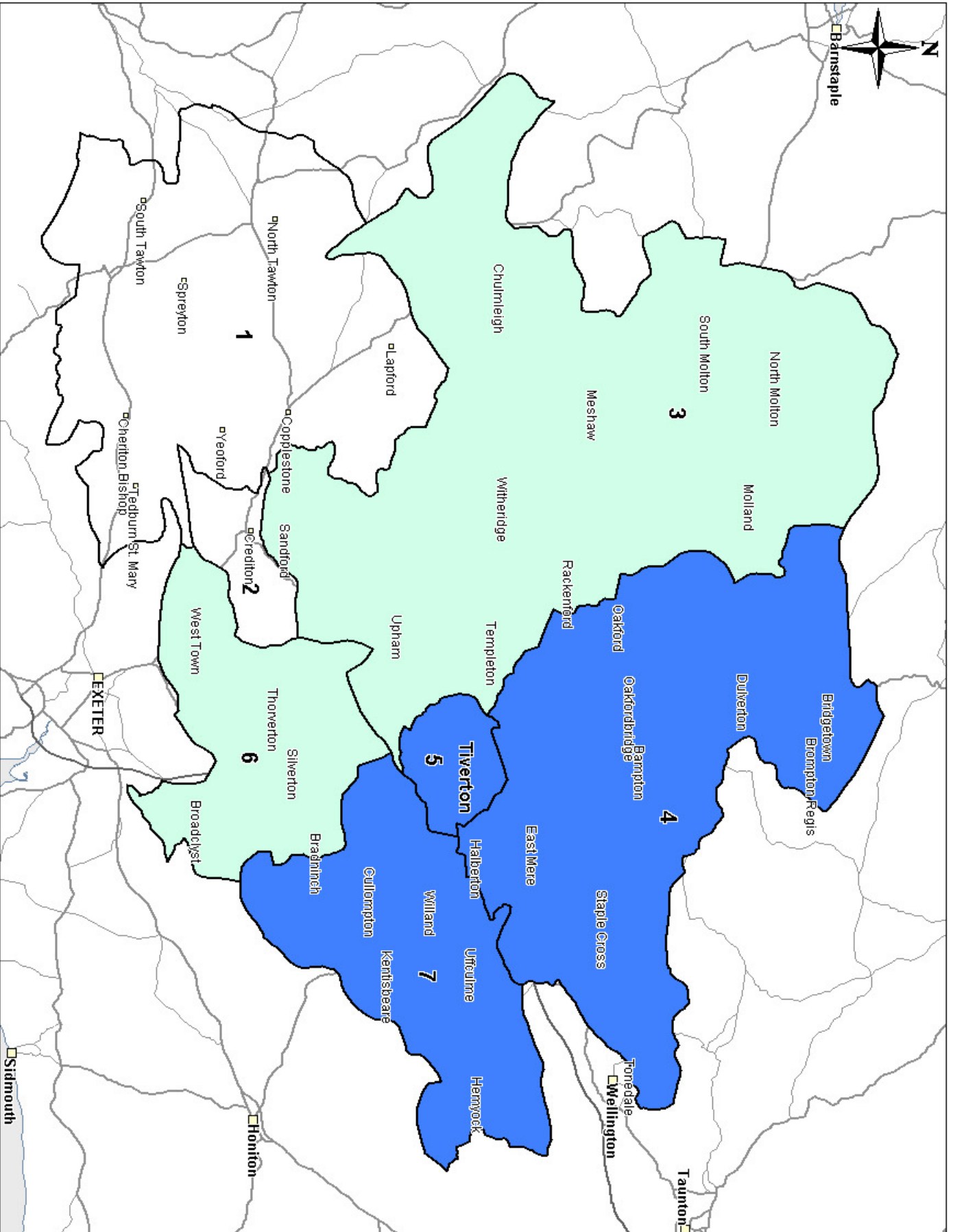


Map 2: Tiverton Comparison Food Catchment Area

- KEY
- Survey Zone
 - Primary Catchment
 - Secondary Catchment



Map reproduced from G8Pro 200 G8 (2009 edition), © Collins Bartholomew Ltd (2009), Postcode Boundary Data © Post Office Ltd 2010



Map 2A: Tiverton Comparison Non-Food Catchment Area

- KEY**
- Survey Zone
 - Primary Catchment
 - Secondary Catchment

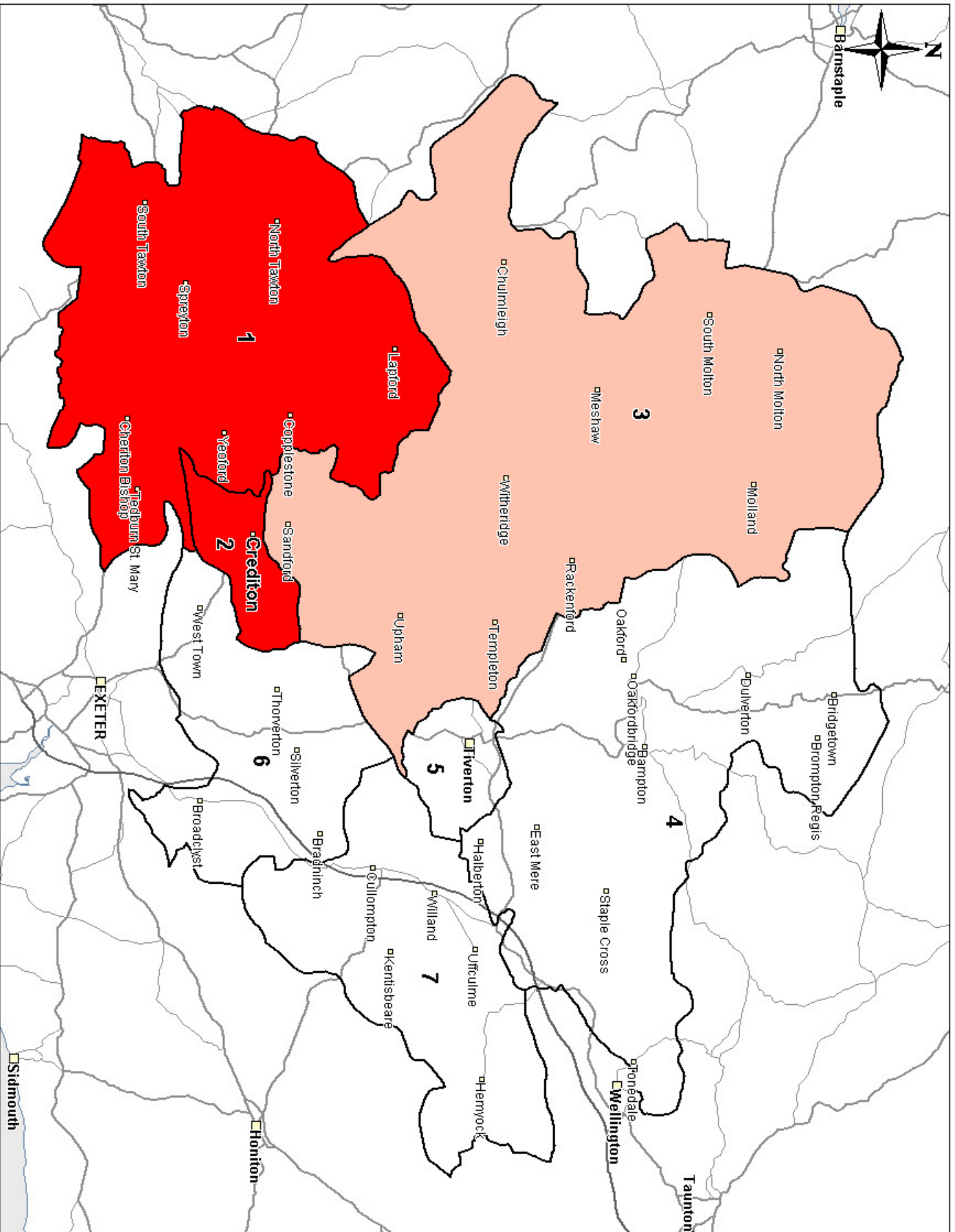
Map reproduced from GBPro 2000 GB (2009 edition), © Collins Bartholomew Ltd (2009), Postcode Boundary Data @Post Office Ltd 2010

Mid Devon Retail Study



Map 3: Crediton Comparison Food Catchment Area

- KEY
- Survey Zone
 - Primary Catchment
 - Secondary Catchment

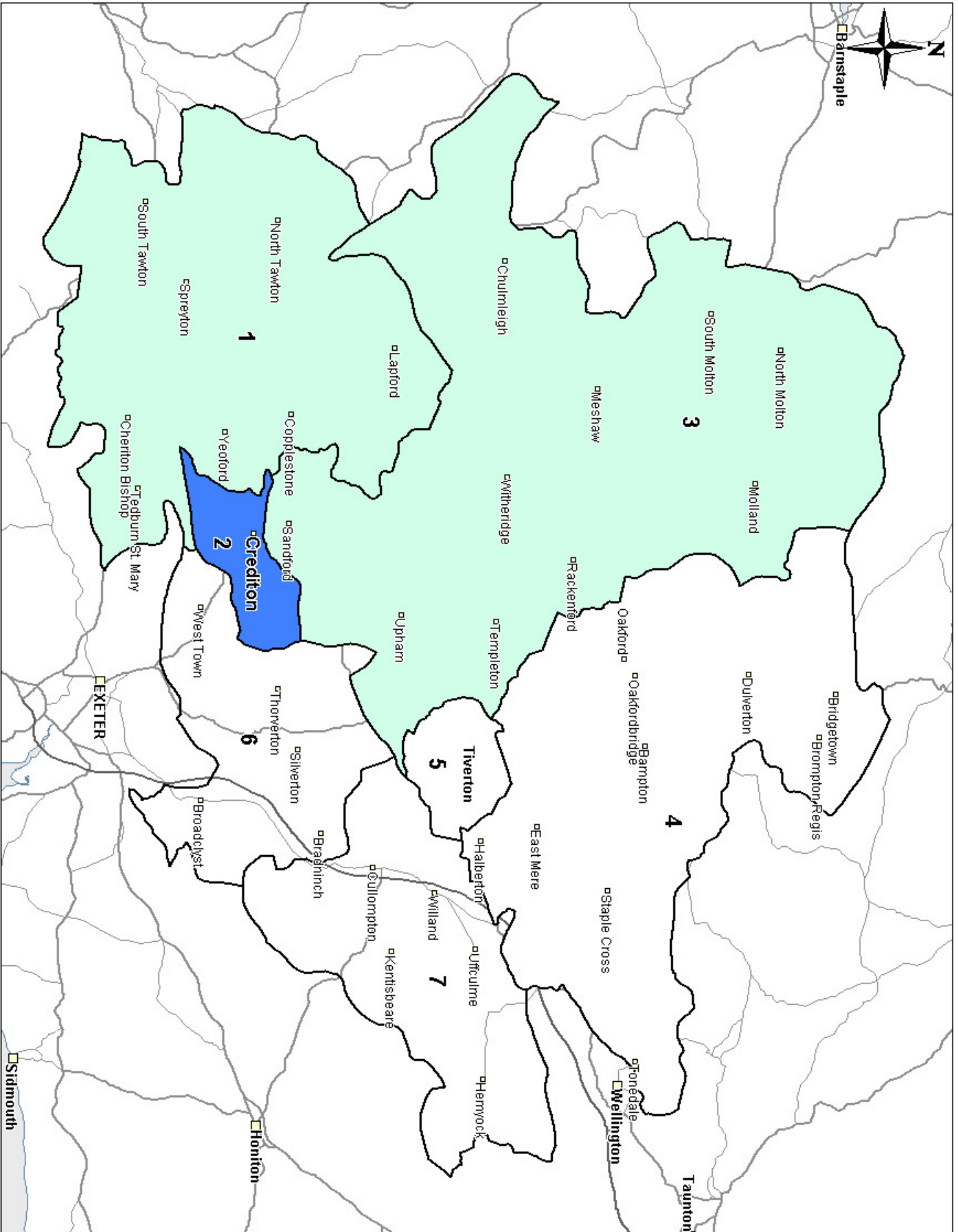


Map reproduced from GBPro 2000 GB (2009 edition), © Collins Bartholomew Ltd (2009), Postcode Boundary Data © Post Office Ltd 2010



Map 4A: Credition Comparison Non-Food Catchment Area

- KEY
- Survey Zone
 - Primary Catchment
 - Secondary Catchment

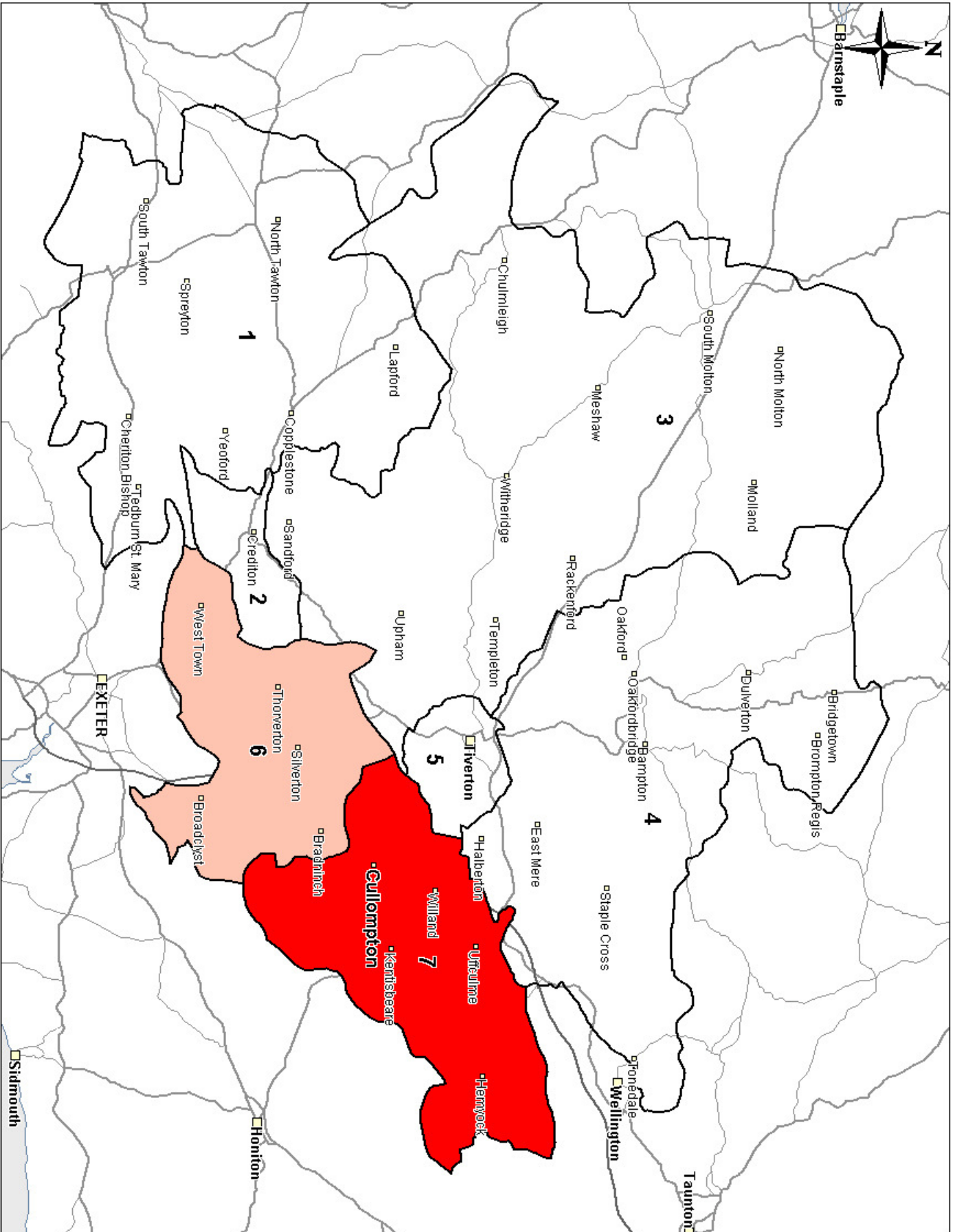


Map reproduced from G8Pro 200 G8 (2009 edition), © Collins Bartholomew Ltd (2009), Postcode Boundary Data @Post Office Ltd 2010



Map 3: Cullompton Comparison Food Catchment Area

- KEY
- Survey Zone
 - Primary Catchment
 - Secondary Catchment

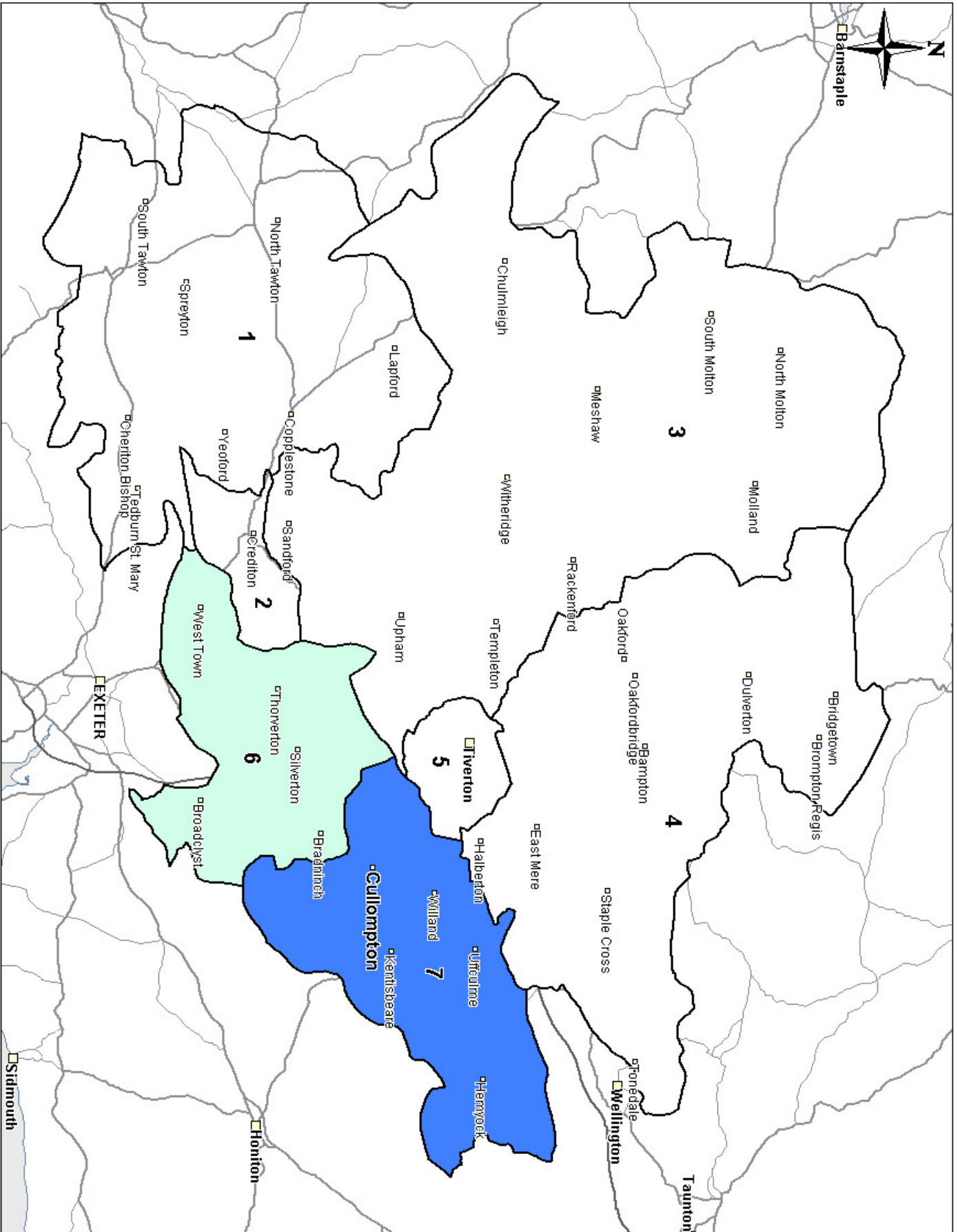


Map reproduced from G8Prio 2000 G8 (2009 edition), © Collins Bartholomew Ltd (2009), Postcode Boundary Data © Post Office Ltd 2010



Map 3A: Cullompton Comparison Non-Food Catchment Area

- KEY
- Survey Zone
 - Primary Catchment
 - Secondary Catchment



Map reproduced from GBPro 2000 GB (2009 edition), © Collins Bartholomew Ltd (2009), Postcode Boundary Data © Post Office Ltd 2010