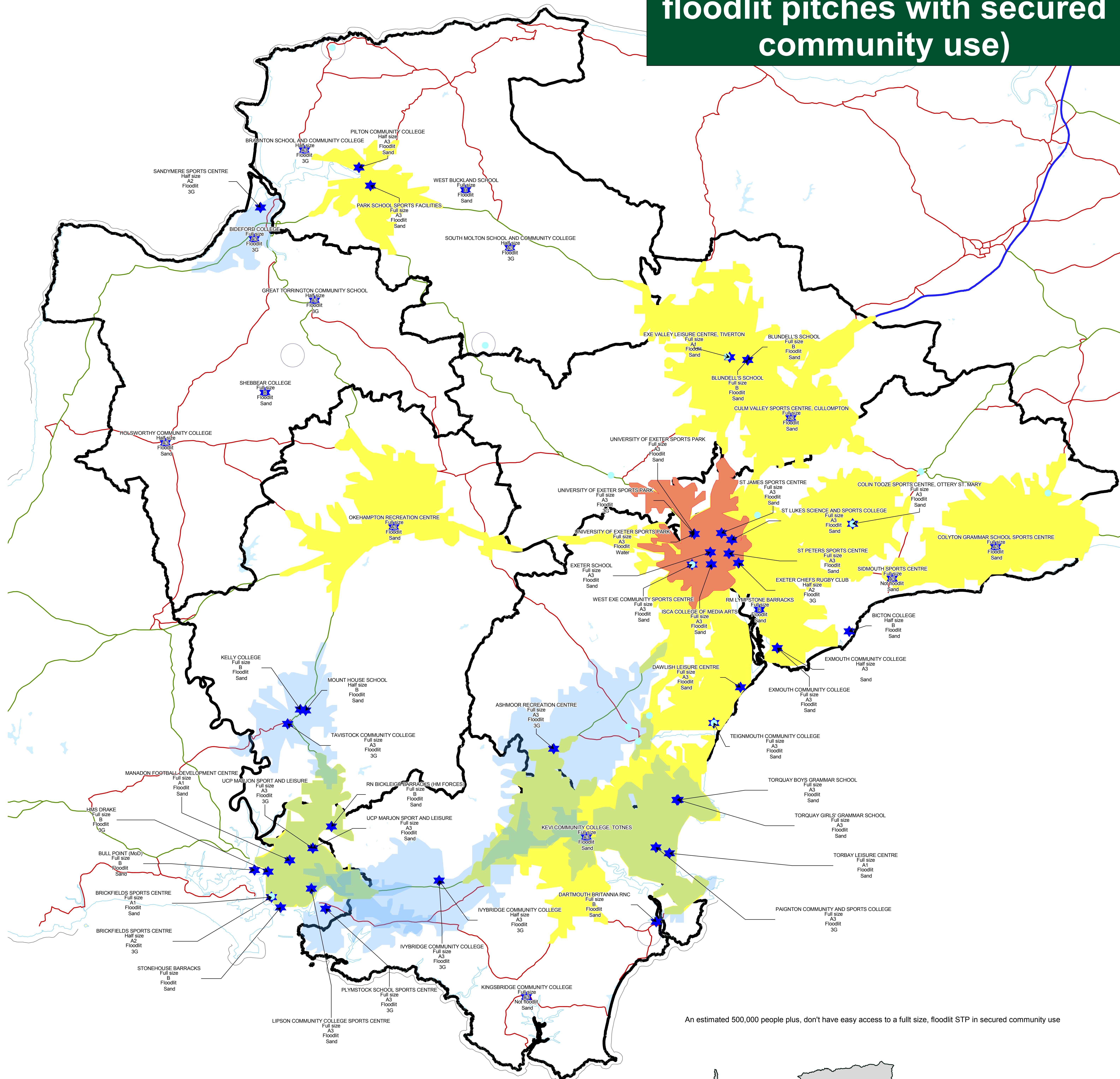
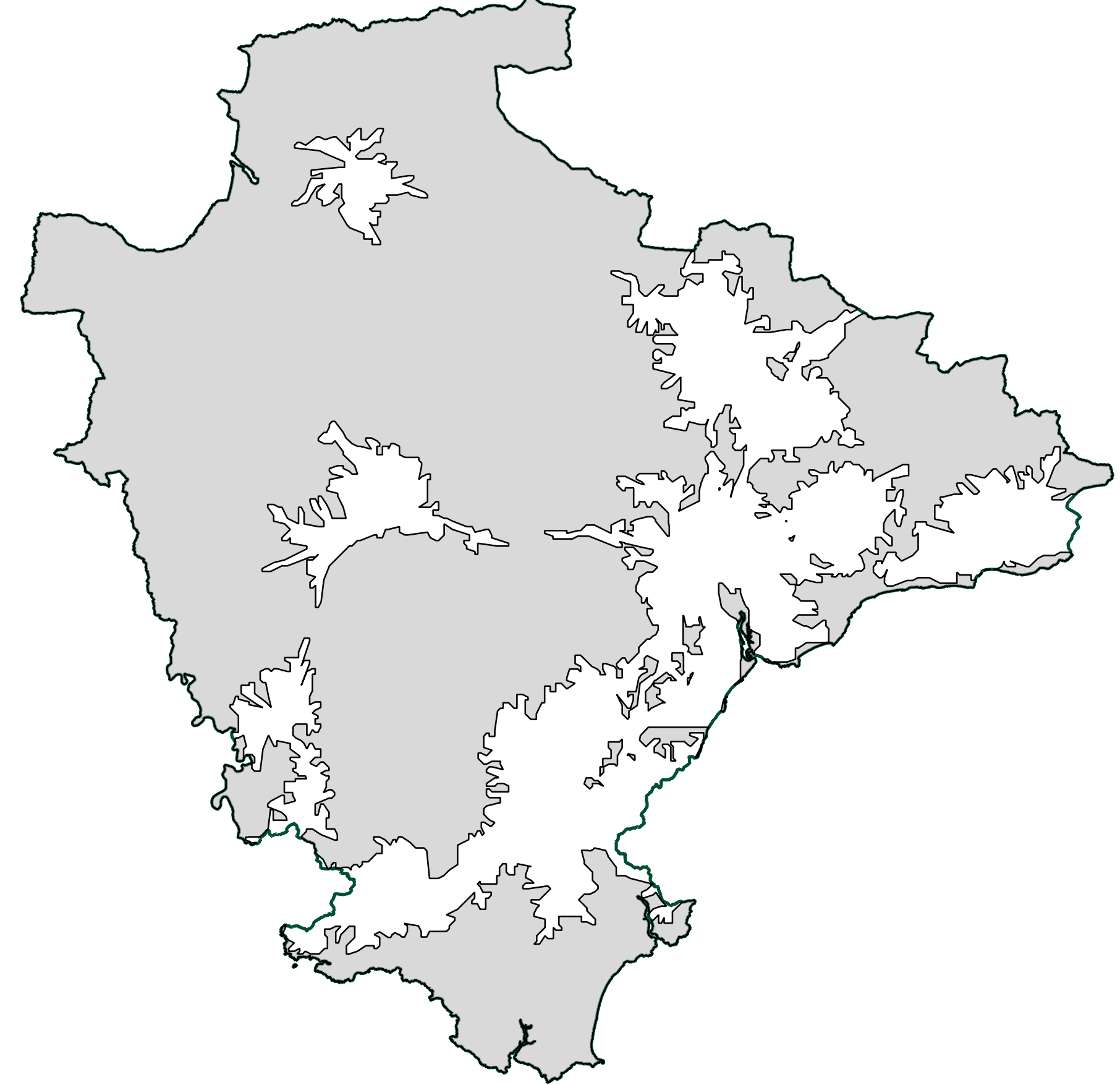


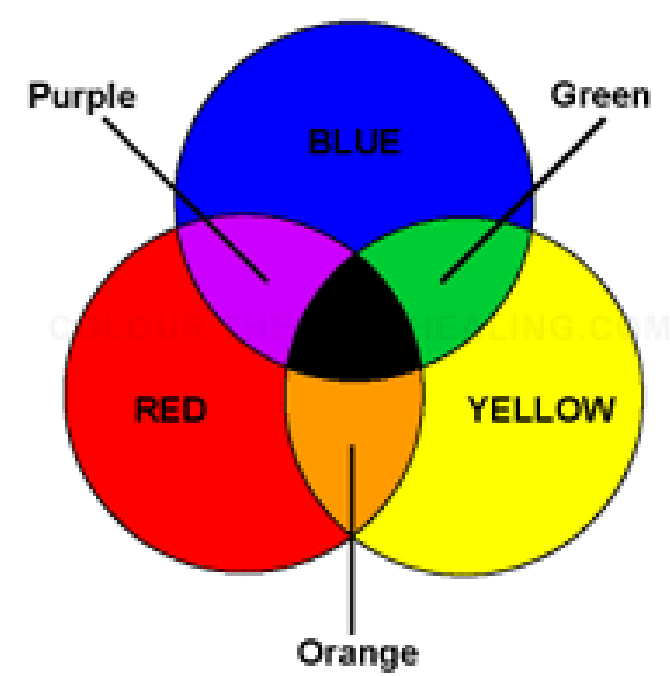
Devon STPs (showing 15 minutes access to full-size, floodlit pitches with secured community use)



An estimated 500,000 people plus, don't have easy access to a full size, floodlit STP in secured community use



Note: catchment colours have been produced by using translucent layers based on the three primary colours, the various combinations of which yield seven potential colours reflecting catchment coverage by surface types(s)



- Sand
- Sand/3G
- Sand/3G/Water
- Water
- Water/Sand
- 3G
- 3G/Water
- BSF schools
- STPs (existing)
- STPs (aspirations)

Road type	Average speed assumption (km/h)
Unclassified Urban	32
Unclassified Rural	32
B Urban	32
B Rural	32
A Urban	40
A Rural	64
A Dual Rural	64
A Dual Urban	40
Primary Urban	40
Primary Rural	64
Primary Dual Urban	48
Primary Dual Rural	80
Motorway Urban	64
Motorway Rural	80



Category	Definition	Supplementary information
A(i)	Secured community pitches	Pitches in local authority or other public ownership or management
A(ii)		Pitches in the voluntary, private or commercial sector which are open to members of the public#
A(iii)		Pitches at education sites which are available for use by the public through formal community use arrangements*
B	Used by community, but not secured	Pitches not included above, that are nevertheless available for community use, eg school/college pitches without formal user agreements
C	Not open for community use	Pitches at establishments which are not, as a matter of policy or practice, available for hire by the public