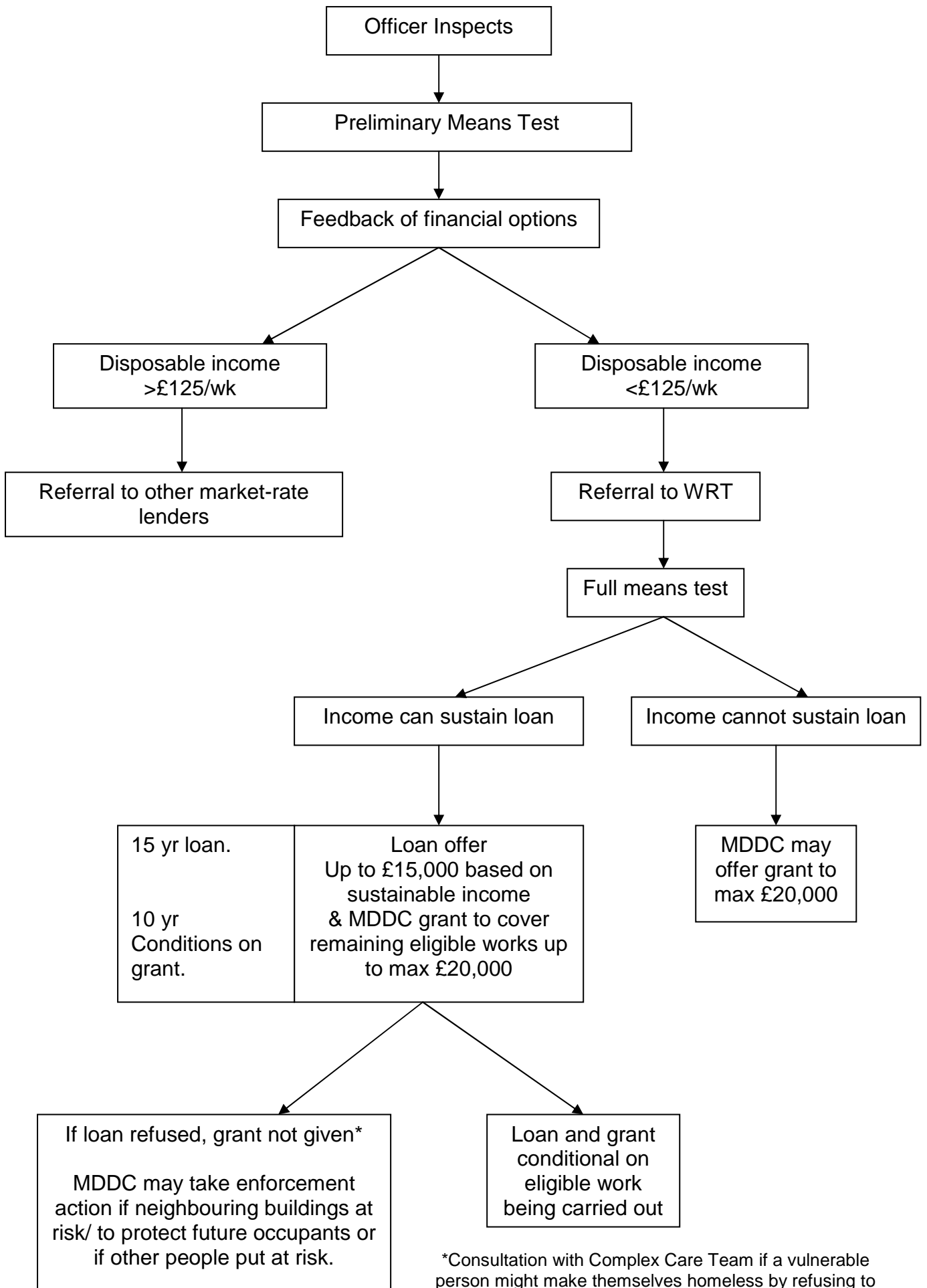


Loan scheme for Owner–Occupiers/tenants’ applications for works to bring up to Decent Home standard; Park Homes (Permanent) and Discretionary Disabled Facilities Grants (DFGs). Not applicable to top-up mandatory DFGs where eligible works exceed the grant maximum



*Consultation with Complex Care Team if a vulnerable person might make themselves homeless by refusing to carry out works with a loan