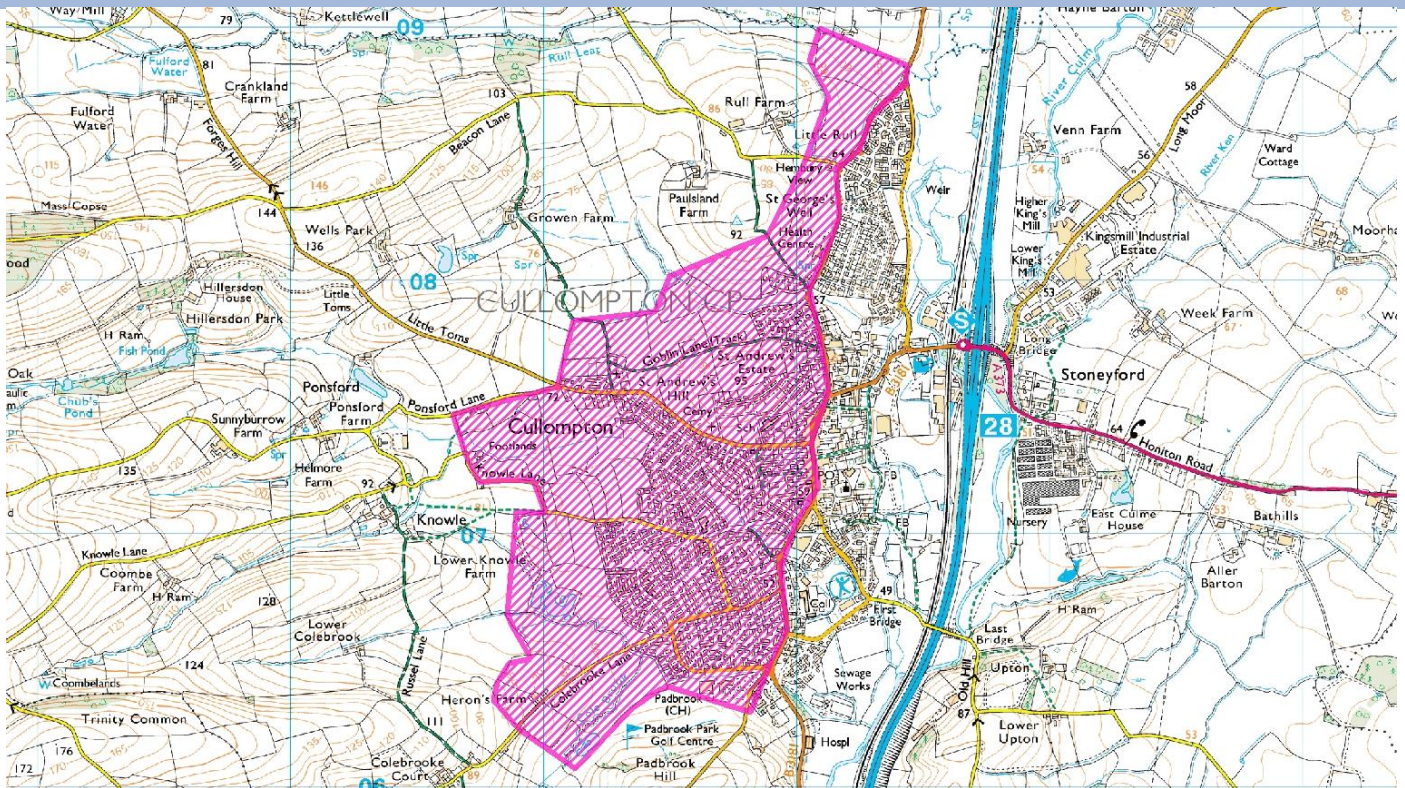


Critical Drainage Area CDA

Mid Devon District Council - Cullompton

May 2014



Catchment Drainage/Flooding Issues

The catchments west of Cullompton (Colebrook, Crow Green Stream, and St Georges Well Stream) are typically small, and respond quickly to rainfall, in particular short duration thunder storm events, as occurred in August 1997. Evidence suggests that the watercourses, in part, have historically been diverted from their natural courses. This, in addition to a legacy of inappropriate culverting, and development on the floodplain, has exacerbated the risk of flooding to numerous properties, businesses and highways.

Surface water runoff from future development, within the hatched area shown above, must be managed to ensure that an overall reduction in flood risk is achieved. Whenever new development is to be permitted in the catchment shown it should; a) be served by a sustainable drainage system that performs in accordance with the criteria set out below and b) should also make a contribution towards a scheme that will reduce risks for those liable to flood, for example, by improving the flow capacity where a channel, culvert or bridge is problem.

Minimum Drainage Standards Required

All new development will have to play their part in reducing current rainfall runoff rates. This requirement also applies to brown field sites that will have to match the same standards.

All off site Surface water discharges from new development should mimic "Greenfield" performance up to a maximum 1 in 10 year discharge. On-site all surface water should be safely managed up to the "1 in 100 + +climate change" conditions. To satisfy the above will require additional water storage areas to be created within the site compared to the normal SUDS design thereby contributing to a reduction in flooding downstream.