

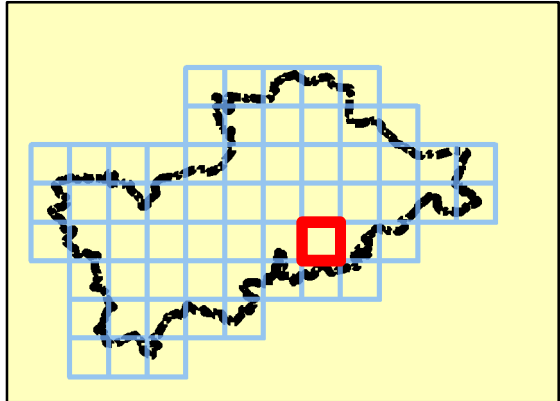
Notes

The climate change map shows the potential impacts that climate change may have on river flows and, subsequently, on flood events. Where models exist in the study area, a change factor has been applied to the 1 in 100 year flows.

Where modelling output is not available, the Environment Agency's flood zones can provide some indication of areas where rare, more extreme flows might affect the floodplain extents, by comparing Flood Zone 3a with Flood Zone 2. For the purposes of this study, a precautionary approach has been adopted where Flood Zone 2 has been used as a guide to provide an indication of the likely increase in extent of Flood Zone 3 with climate change (hatched areas).

Developers should assess the flood risk implications of climate change to development as part of a detailed Flood Risk Assessment.

Key Plan



Legend

- Mid Devon DC Boundary
- Flood Zone 3 with Climate Change
- Indicative Extent of Flood Zone 3 with Climate Change



REF	Date	Comments
A	May 2014	Draft
B	Aug 2014	Final
C		

Reproduced from Ordnance Survey mapping with the permission of Ordnance Survey on behalf of the Controller of Her Majesty's Stationary Office. © Crown copyright and database rights 2014 Ordnance Survey 0100031673.

Mid Devon District Council SFRA

APPENDIX D

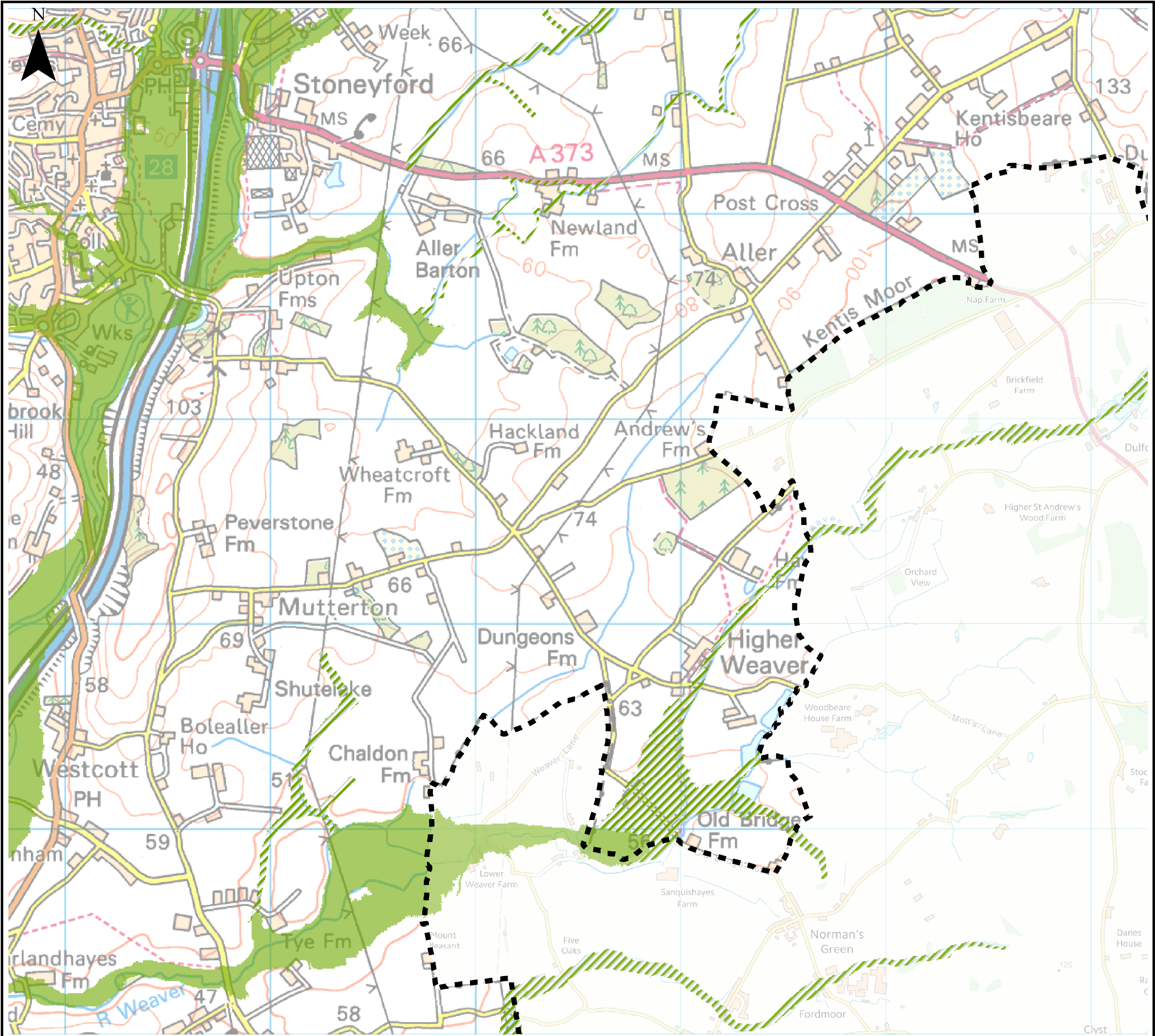
CLIMATE CHANGE FLOOD OUTLINE

Sheet No: 43 of 61

Index Number: MDDC_Index_43

This document is the property of Jeremy Benn Associates Ltd. It shall not be reproduced in whole or in part, nor disclosed to a third party, without the permission of Jeremy Benn Associates Ltd.





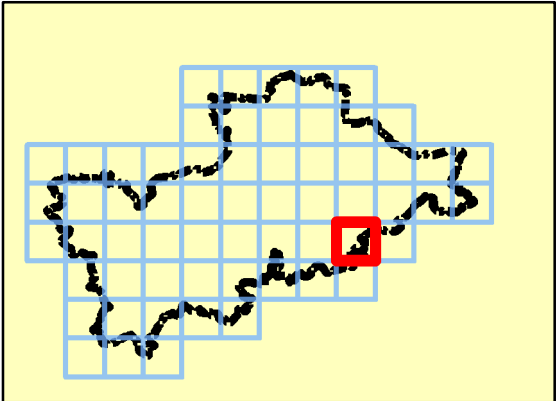
Notes

The climate change map shows the potential impacts that climate change may have on river flows and, subsequently, on flood events. Where models exist in the study area, a change factor has been applied to the 1 in 100 year flows.

Where modelling output is not available, the Environment Agency's flood zones can provide some indication of areas where rare, more extreme flows might affect the floodplain extents, by comparing Flood Zone 3a with Flood Zone 2. For the purposes of this study, a precautionary approach has been adopted where Flood Zone 2 has been used as a guide to provide an indication of the likely increase in extent of Flood Zone 3 with climate change (hatched areas).

Developers should assess the flood risk implications of climate change to development as part of a detailed Flood Risk Assessment.

Key Plan



Legend

- Mid Devon DC Boundary
- Flood Zone 3 with Climate Change
- Indicative Extent of Flood Zone 3 with Climate Change

0 0.125 0.25 0.5 0.75 1 km

REF	Date	Comments
A	May 2014	Draft
B	Aug 2014	Final
C		

Reproduced from Ordnance Survey mapping with the permission of Ordnance Survey on behalf of the Controller of Her Majesty's Stationary Office. © Crown copyright and database rights 2014 Ordnance Survey 0100031673.

Mid Devon District Council SFRA

APPENDIX D

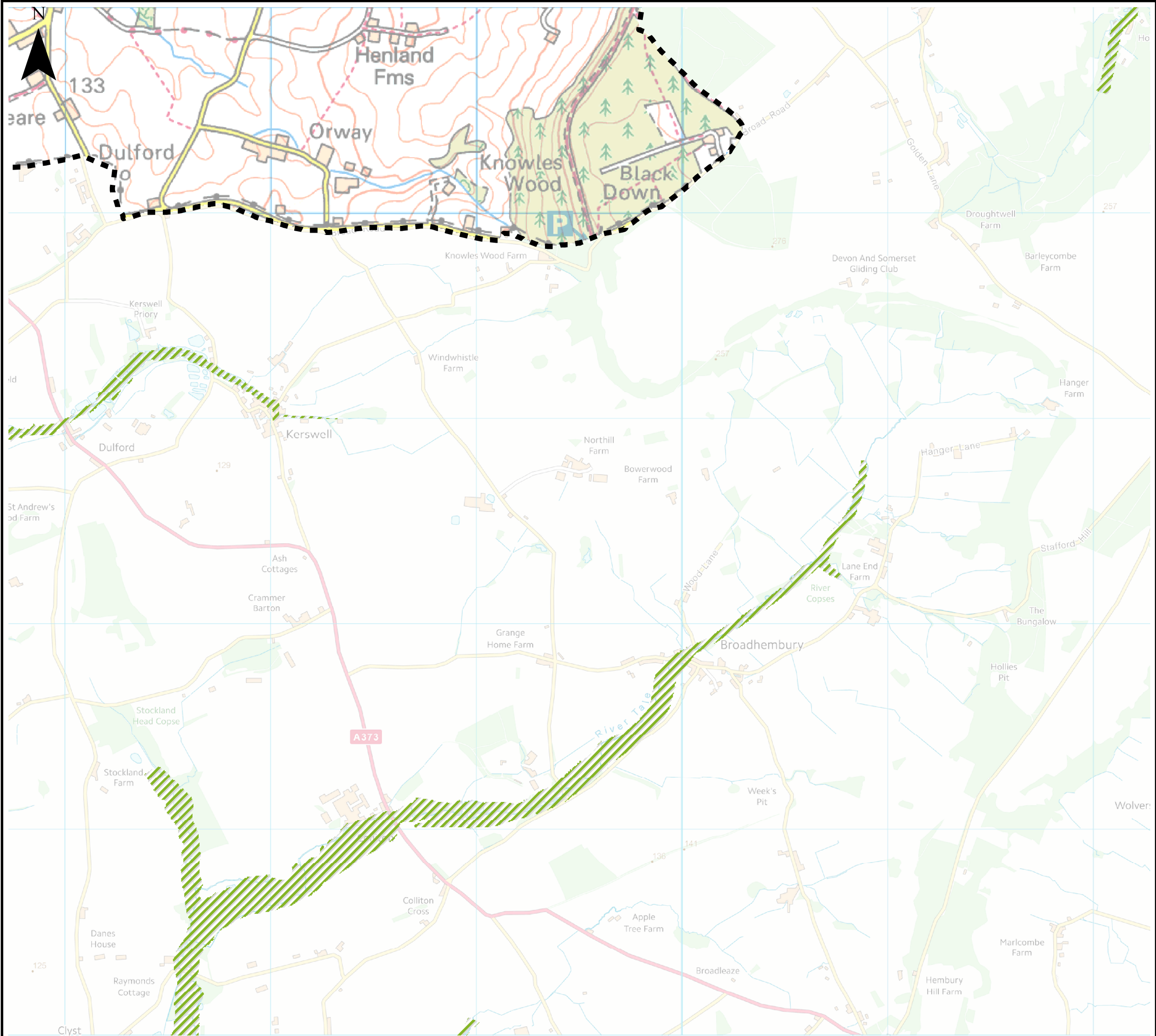
CLIMATE CHANGE FLOOD OUTLINE

Sheet No: 44 of 61

Index Number: MDDC_Index_44

This document is the property of Jeremy Benn Associates Ltd. It shall not be reproduced in whole or in part, nor disclosed to a third party, without the permission of Jeremy Benn Associates Ltd.





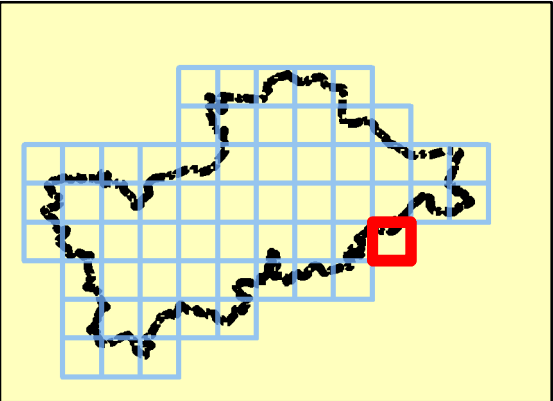
Notes

The climate change map shows the potential impacts that climate change may have on river flows and, subsequently, on flood events. Where models exist in the study area, a change factor has been applied to the 1 in 100 year flows.

Where modelling output is not available, the Environment Agency's flood zones can provide some indication of areas where rare, more extreme flows might affect the floodplain extents, by comparing Flood Zone 3a with Flood Zone 2. For the purposes of this study, a precautionary approach has been adopted where Flood Zone 2 has been used as a guide to provide an indication of the likely increase in extent of Flood Zone 3 with climate change (hatched areas).

Developers should assess the flood risk implications of climate change to development as part of a detailed Flood Risk Assessment.

Key Plan



Legend

- Mid Devon DC Boundary
- Flood Zone 3 with Climate Change
- Indicative Extent of Flood Zone 3 with Climate Change



REF	Date	Comments
A	May 2014	Draft
B	Aug 2014	Final
C		

Reproduced from Ordnance Survey mapping with the permission of Ordnance Survey on behalf of the Controller of Her Majesty's Stationary Office. © Crown copyright and database rights 2014 Ordnance Survey 0100031673.

Mid Devon District Council SFRA

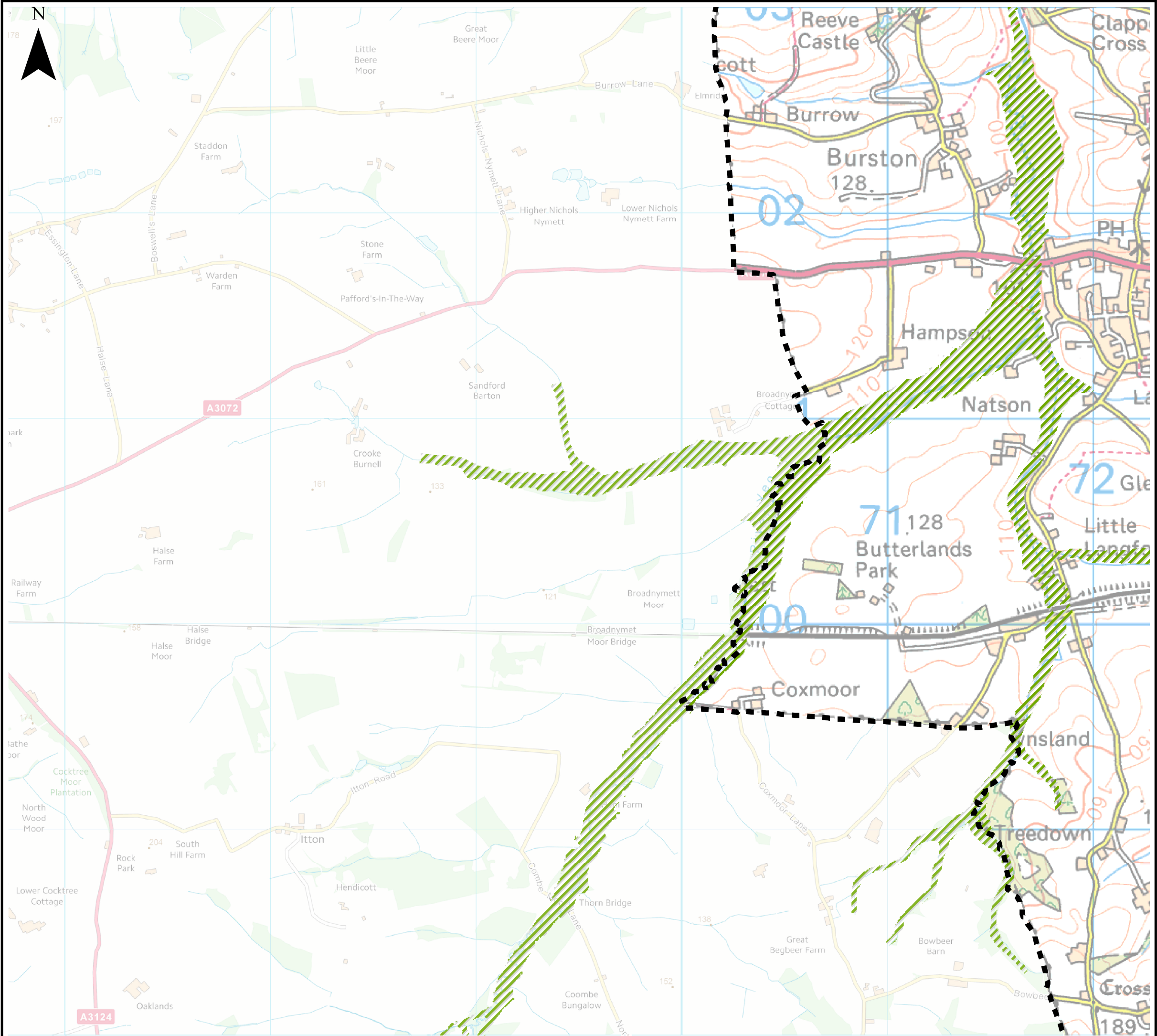
APPENDIX D

CLIMATE CHANGE FLOOD OUTLINE

Sheet No: 45 of 61 Index Number: MDDC_Index_45

This document is the property of Jeremy Benn Associates Ltd. It shall not be reproduced in whole or in part, nor disclosed to a third party, without the permission of Jeremy Benn Associates Ltd.





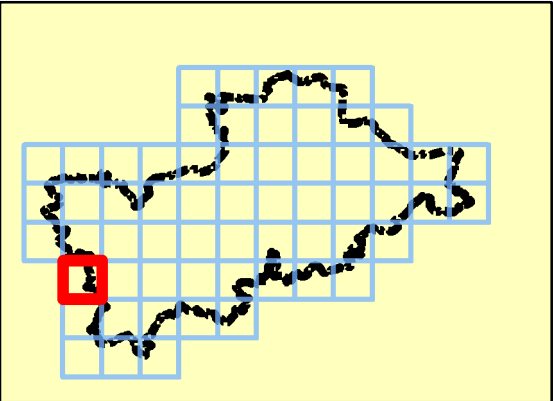
Notes

The climate change map shows the potential impacts that climate change may have on river flows and, subsequently, on flood events. Where models exist in the study area, a change factor has been applied to the 1 in 100 year flows.

Where modelling output is not available, the Environment Agency's flood zones can provide some indication of areas where rare, more extreme flows might affect the floodplain extents, by comparing Flood Zone 3a with Flood Zone 2. For the purposes of this study, a precautionary approach has been adopted where Flood Zone 2 has been used as a guide to provide an indication of the likely increase in extent of Flood Zone 3 with climate change (hatched areas).

Developers should assess the flood risk implications of climate change to development as part of a detailed Flood Risk Assessment.

Key Plan



Legend

- Mid Devon DC Boundary
- Flood Zone 3 with Climate Change
- Indicative Extent of Flood Zone 3 with Climate Change



REF	Date	Comments
A	May 2014	Draft
B	Aug 2014	Final
C		

Reproduced from Ordnance Survey mapping with the permission of Ordnance Survey on behalf of the Controller of Her Majesty's Stationary Office. © Crown copyright and database rights 2014 Ordnance Survey 0100031673.

Mid Devon District Council SFRA

APPENDIX D

CLIMATE CHANGE FLOOD OUTLINE

Sheet No: 46 of 61 Index Number: MDDC_Index_46

This document is the property of Jeremy Benn Associates Ltd. It shall not be reproduced in whole or in part, nor disclosed to a third party, without the permission of Jeremy Benn Associates Ltd.

