



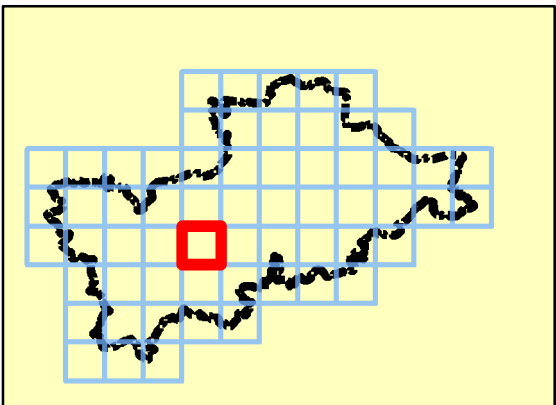
Notes

The uFSfSW shows the flooding that takes place from the 'surface runoff' generated by rainwater (including snow and other precipitation) which:
(a) is on the surface of the ground (whether or not it is moving), and
(b) has not yet entered a watercourse, drainage system or public sewer.

The updated Flood Map for Surface Water will pick out natural drainage channels, rivers, low areas in the floodplain and flow paths between buildings but it will only indicate flooding caused by local rainfall.

Note: The updated Flood Map for Surface Water shows predictions of flooded areas but does not show whether individual properties will be affected by surface water flooding or have been affected in the past. The updated Flood Map for Surface Water should not be used to predict if individual properties will flood.

Key Plan



Legend

- Mid Devon DC Boundary
- uFMSW 30-year Extent
- uFMSW 100-year Extent
- uFMSW 1,000-year Extent



REF	Date	Comments
A	May 2014	Draft
B	Aug 2014	Final
C		

Reproduced from Ordnance Survey mapping with the permission of Ordnance Survey on behalf of the Controller of Her Majesty's Stationary Office. © Crown copyright and database rights 2014 Ordnance Survey 0100031673.

**Mid Devon District Council
SFRA**

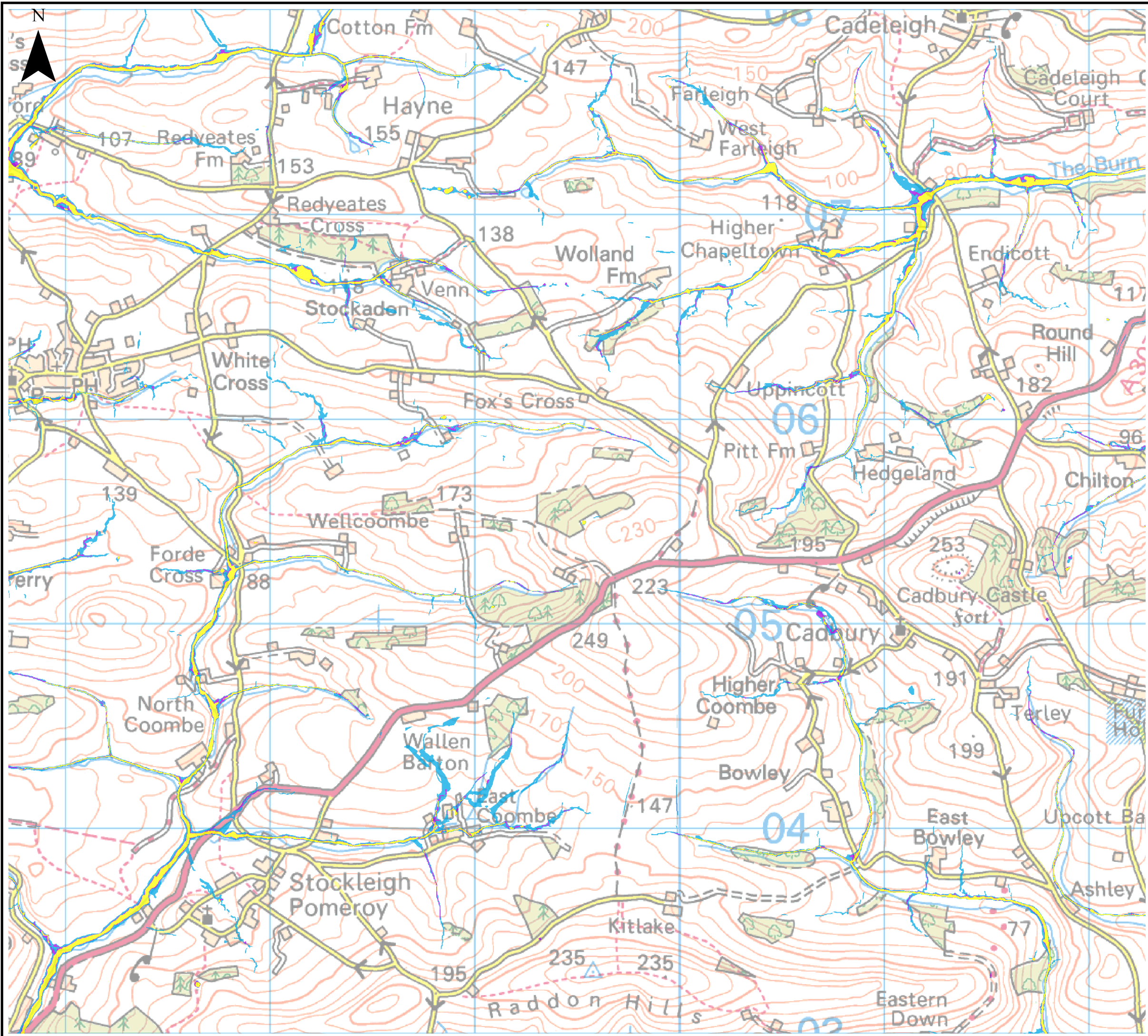
APPENDIX F

SURFACE WATER FLOOD MAPS

Sheet No: 40 of 61 Index Number: MDDC_Index_40

This document is the property of Jeremy Benn Associates Ltd. It shall not be reproduced in whole or in part, nor disclosed to a third party, without the permission of Jeremy Benn Associates Ltd.





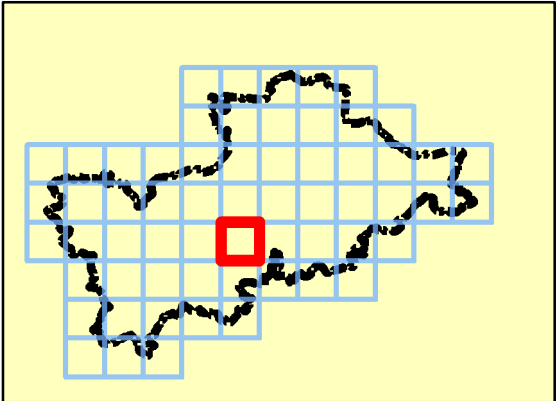
Notes

The uFSfSW shows the flooding that takes place from the 'surface runoff' generated by rainwater (including snow and other precipitation) which:
(a) is on the surface of the ground (whether or not it is moving), and
(b) has not yet entered a watercourse, drainage system or public sewer.

The updated Flood Map for Surface Water will pick out natural drainage channels, rivers, low areas in the floodplain and flow paths between buildings but it will only indicate flooding caused by local rainfall.

Note: The updated Flood Map for Surface Water shows predictions of flooded areas but does not show whether individual properties will be affected by surface water flooding or have been affected in the past. The updated Flood Map for Surface Water should not be used to predict if individual properties will flood.

Key Plan



Legend

- Mid Devon DC Boundary
- uFMfSW 30-year Extent
- uFMfSW 100-year Extent
- uFMfSW 1,000-year Extent



REF	Date	Comments
A	May 2014	Draft
B	Aug 2014	Final
C		

Reproduced from Ordnance Survey mapping with the permission of Ordnance Survey on behalf of the Controller of Her Majesty's Stationary Office. © Crown copyright and database rights 2014 Ordnance Survey 0100031673.

Mid Devon District Council SFRA

APPENDIX F

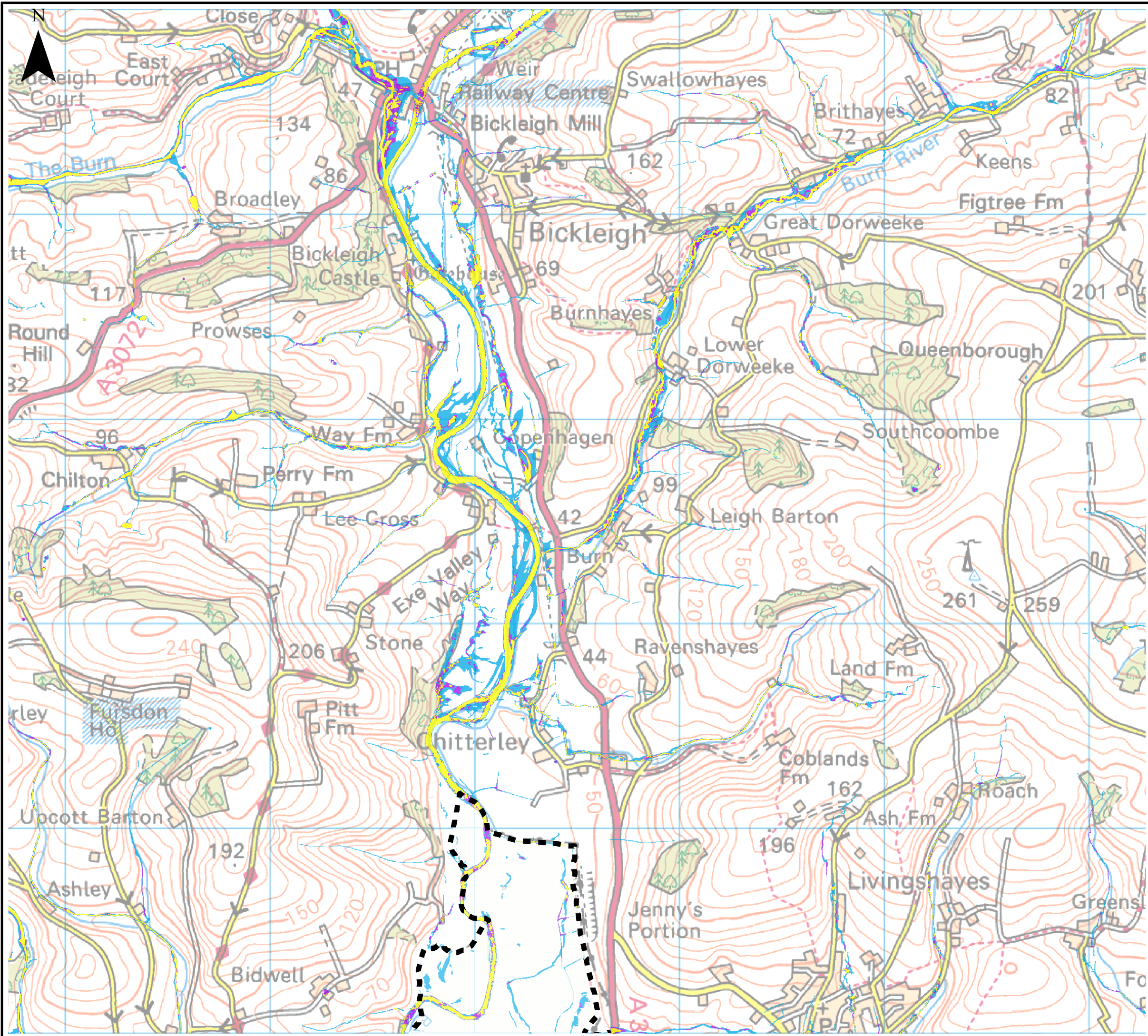
SURFACE WATER FLOOD MAPS

Sheet No: 41 of 61

Index Number: MDDC_Index_41

This document is the property of Jeremy Benn Associates Ltd. It shall not be reproduced in whole or in part, nor disclosed to a third party, without the permission of Jeremy Benn Associates Ltd.





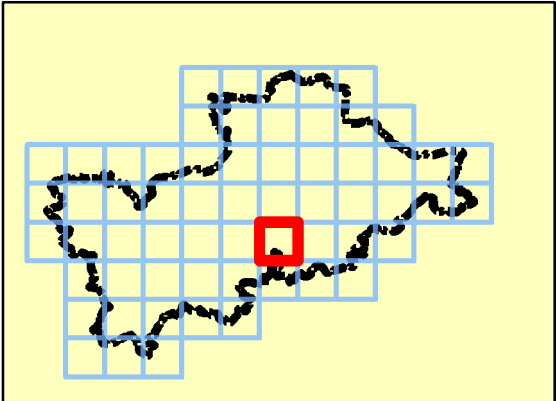
Notes

The uFSfSW shows the flooding that takes place from the 'surface runoff' generated by rainwater (including snow and other precipitation) which:
(a) is on the surface of the ground (whether or not it is moving), and
(b) has not yet entered a watercourse, drainage system or public sewer.

The updated Flood Map for Surface Water will pick out natural drainage channels, rivers, low areas in the floodplain and flow paths between buildings but it will only indicate flooding caused by local rainfall.

Note: The updated Flood Map for Surface Water shows predictions of flooded areas but does not show whether individual properties will be affected by surface water flooding or have been affected in the past. The updated Flood Map for Surface Water should not be used to predict if individual properties will flood.

Key Plan



Legend

- Mid Devon DC Boundary
- uFMfSW 30-year Extent
- uFMfSW 100-year Extent
- uFMfSW 1,000-year Extent



REF	Date	Comments
A	May 2014	Draft
B	Aug 2014	Final
C		

Reproduced from Ordnance Survey mapping with the permission of Ordnance Survey on behalf of the Controller of Her Majesty's Stationary Office. © Crown copyright and database rights 2014 Ordnance Survey 0100031673.

Mid Devon District Council SFRA

APPENDIX F

SURFACE WATER FLOOD MAPS

Sheet No: 42 of 61

Index Number: MDDC_Index_42

This document is the property of Jeremy Benn Associates Ltd. It shall not be reproduced in whole or in part, nor disclosed to a third party, without the permission of Jeremy Benn Associates Ltd.

