

# Basic facts about Mid Devon by Ward



Written by LGA Research from Local Government  
Association

## Basic facts about Mid Devon by Ward

This report provides a summary of the latest available information on the demographic and socio-economic make-up of the 24 wards in Mid Devon. It looks at the population structure and provides information on the economic, housing and educational achievement of each ward.

This sample report is one of a series of reports available from the Local Government Association's LG Inform Plus service. Other free reports include demographic and economic profiles of individual wards and health and wellbeing profiles which enable a side by side comparison of all ward(s) in Mid Devon.

With a subscription to LG Inform Plus there are many more reports about your area available to you. You can also see detailed maps, charts, tables and reports about any of nearly 1500 metric types from the LG Inform Plus database showing statistics such as the population, health, economy and facilities in your area (and many others).

A subscription also allows you to create your own tables, charts and maps for ward(s) and other areas within your authority's boundary or build a custom area report using the full set of national and local data stored in our database, as well as giving you access to many other useful tools.

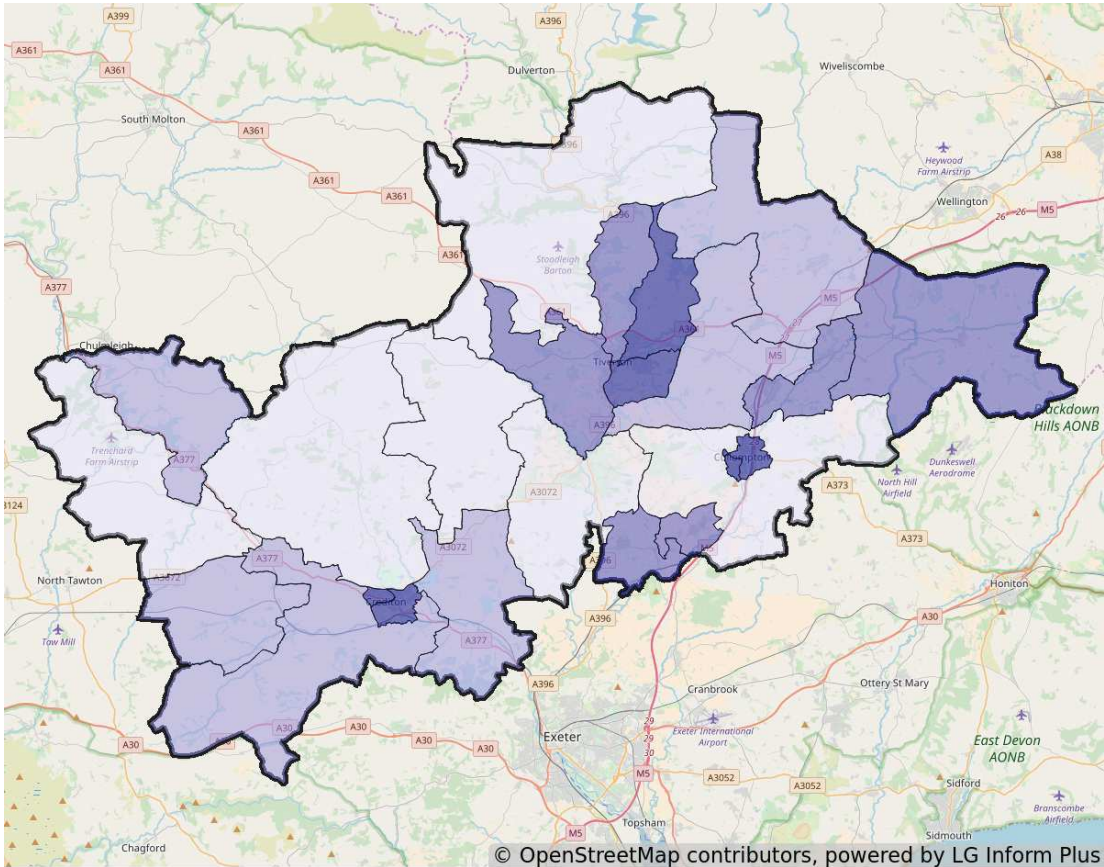
To find out more about our service please telephone 020 7664 3195 or email: [lginformplus@local.gov.uk](mailto:lginformplus@local.gov.uk).

## Geography and population

Here is a breakdown of Mid Devon giving the area, population size and gender split of each ward.

The total area of Mid Devon district is 91,289.78 hectares. The ward with the largest area is Clare and Shuttern, representing 12.45% of all Wards in the district.

The most densely populated ward is Cullompton South with 51.78 persons per hectare , the least densely populated ward is Taw with 0.29 persons per hectare .



### Population density (2016)

- $\geq 3.97 \leq 51.78$  persons per hectare
- $\geq 0.55 < 3.97$  persons per hectare
- $\geq 0.38 < 0.55$  persons per hectare
- $\geq 0.29 < 0.38$  persons per hectare

The total resident population of Mid Devon is 79,900. The ward with the largest population is Lowman, representing 9.02% of the total resident population of all Wards in Mid Devon.

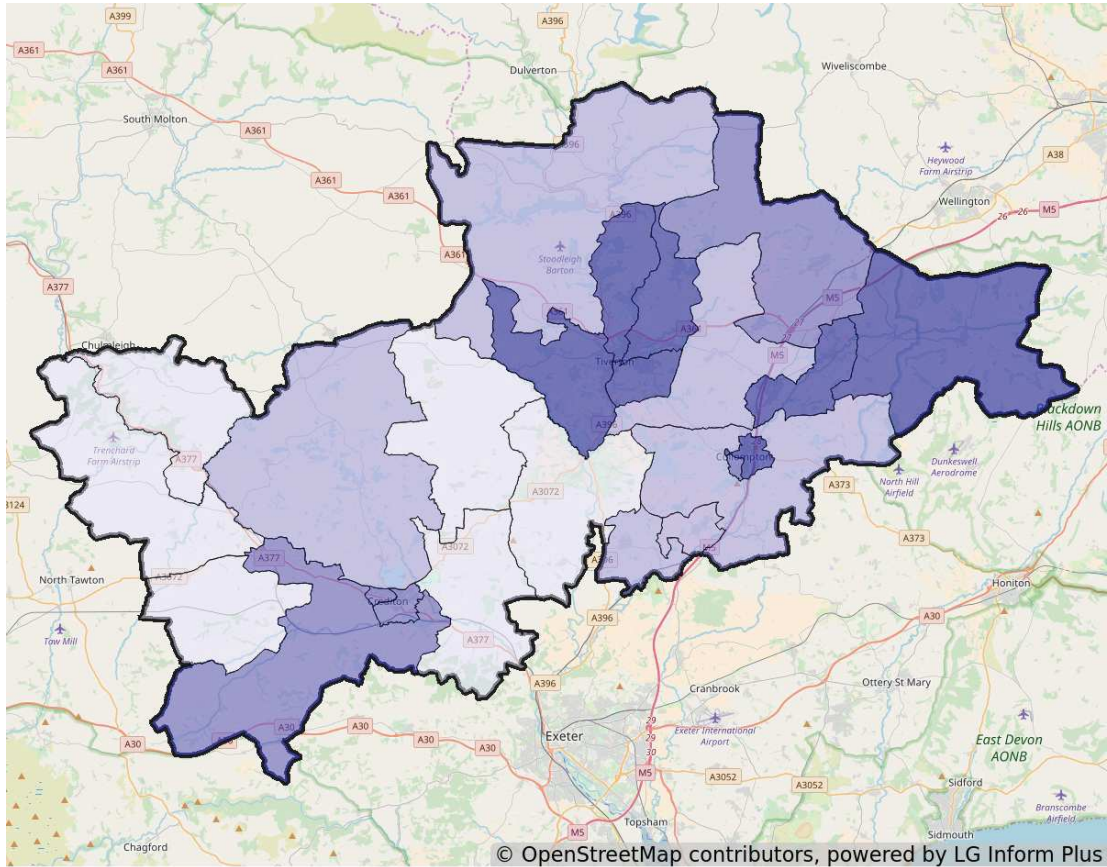
	Geographical area, land only measurements	Total resident population	Percentage Of all usual residents - male	Percentage Of all usual residents - female
	2016	2015	2011	2011
	Hectares	People	%	%
<b>Boniface</b>	350.63	3,921	49.9	50.1
<b>Bradninch</b>	625.11	2,073	47.8	52.2
<b>Cadbury</b>	4,684.83	1,658	48.9	51.1
<b>Canon-sleigh</b>	6,191.34	3,182	49.4	50.6
<b>Castle</b>	1,785.86	4,256	48.8	51.2
<b>Clare and Shuttern</b>	11,362.11	3,455	48.7	51.3
<b>Cranmore</b>	789.29	5,065	47.9	52.1
<b>Cullompton North</b>	303.83	4,188	48.3	51.7
<b>Cullompton Outer</b>	6,095.07	2,175	49.5	50.5
<b>Cullompton South</b>	78.16	3,986	48.9	51.1
<b>Halberton</b>	4,416.52	2,114	49.9	50.1
<b>Lawrence</b>	108.05	3,812	47.8	52.2
<b>Lower Culm</b>	1,523.24	5,928	49.0	51.0
<b>Lowman</b>	1,685.03	7,175	49.2	50.8
<b>Newbrooke</b>	4,024.17	1,534	48.6	51.4
<b>Sandford and Creedy</b>	10,703.00	3,436	49.4	50.6
<b>Silverton</b>	1,268.54	1,895	47.6	52.4
<b>Taw</b>	5,781.08	1,692	48.0	52.0
<b>Taw Vale</b>	3,689.81	1,662	49.8	50.2
<b>Upper Culm</b>	7,158.90	4,108	49.3	50.7
<b>Upper Yeo</b>	3,390.21	1,764	48.7	51.3
<b>Way</b>	5,109.83	1,621	50.2	49.8
<b>Westexe</b>	2,890.94	5,227	48.9	51.1
<b>Yeo</b>	7,274.23	3,583	50.9	49.1

## Age

This table gives a broad age breakdown by ward in Mid Devon. Lowman ward has the highest number of 0-17 year olds representing 11.77% of that age group within Wards in the ward.

Lower Culm ward has the highest number of people aged 65 and over representing 7.69% of that age group in Wards in Mid Devon.

	Population aged 0 to 17 (census)	Population aged 18 to 64 (census)	Population aged 65 and over (census)
	2011	2011	2011
	People	People	People
Boniface	774	2,359	691
Bradninch	517	1,131	393
Cadbury	328	917	357
Canonsleigh	690	1,907	621
Castle	806	2,512	907
Clare and Shuttern	562	1,931	919
Cranmore	1,011	2,848	1,191
Cullompton North	842	2,445	712
Cullompton Outer	418	1,238	388
Cullompton South	739	2,218	687
Halberton	497	1,213	386
Lawrence	719	2,163	894
Lower Culm	1,231	3,357	1,220
Lowman	1,941	3,916	928
Newbrooke	269	890	361
Sandford and Creedy	717	1,995	717
Silverton	379	1,061	435
Taw	330	994	336
Taw Vale	260	933	436
Upper Culm	856	2,347	836
Upper Yeo	374	1,034	300
Way	342	948	313
Westexe	1,138	2,920	1,217
Yeo	751	2,117	620



**Dependent children: All ages (2011)**

- $\geq 463 \leq 951$
- $\geq 375 < 463$
- $\geq 205 < 375$
- $\geq 144 < 205$

This map shows numbers of households with dependent children for all Wards in Mid Devon.

Lowman is the ward with the highest number of households (951) with dependent children in the district and Taw Vale is the ward with the lowest number of households with dependent children (144).

**Ethnic mix**

This table shows the ethnic mix of each ward in Mid Devon. Lowman ward has the highest number of Asian / Asian British residents in the ward.

Cullompton South ward has the highest number of Black / African / Caribbean /Black British residents in Mid Devon.



	Residents who are White	Residents who are Mixed/multiple ethnic groups	Residents who are Asian/Asian British	Residents who are Black/African/Caribbean/Black British	Residents who are Other ethnic group
	2011	2011	2011	2011	2011
	People	People	People	People	People
Boniface	3,755	20	33	9	7
Brad-ninch	2,023	15	1	0	2
Cadbury	1,586	12	4	0	0
Canon-sleigh	3,191	16	9	2	0
Castle	4,154	23	36	7	5
Clare and Shuttern	3,389	10	8	4	1
Cran-more	4,992	25	20	10	3
Cullompton North	3,923	17	49	7	3
Cullompton Outer	2,017	14	11	1	1
Cullompton South	3,586	24	18	14	2
Halberton	2,069	20	4	2	1
Lawrence	3,714	15	35	5	7
Lower Culm	5,729	50	22	4	3
Lowman	6,636	47	90	11	1
New-brooke	1,481	16	17	5	1
Sandford and Creedy	3,388	26	14	1	0
Silverton	1,860	9	4	0	2
Taw	1,645	10	3	1	1
Taw Vale	1,617	8	3	0	1
Upper Culm	3,999	25	10	2	3
Upper Yeo	1,684	20	2	2	0
Way	1,589	8	6	0	0
Westexe	5,215	29	22	6	3
Yeo	3,454	25	7	1	1

## Housing

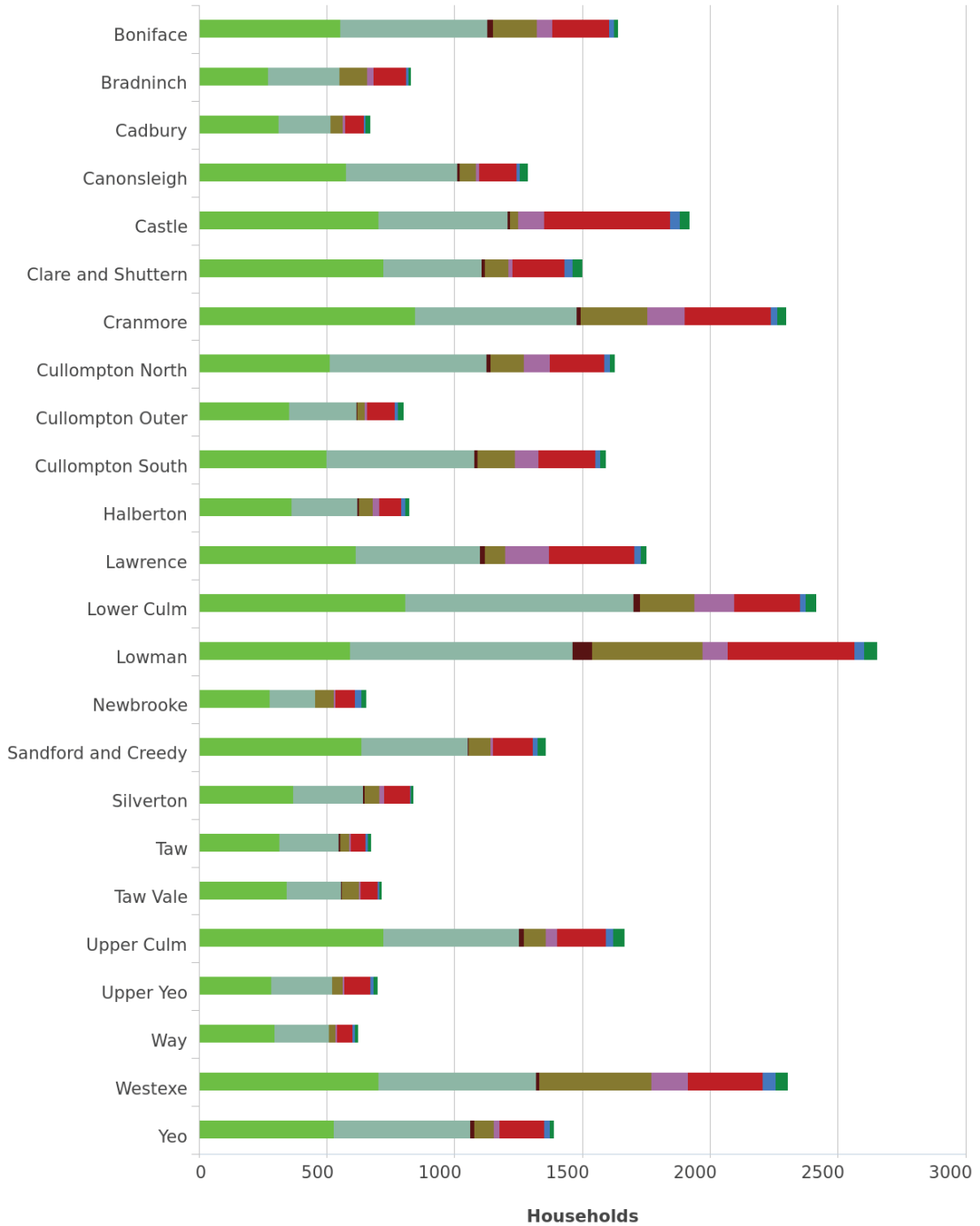
There are 32,758 households in Mid Devon, this chart shows the households of each ward in Mid Devon broken down by tenure. Westexe ward has 440 households rented from the council, which is the highest number for any ward in Mid Devon.

Lawrence ward has 170 households of other types of social renting, which is the highest number for any ward in Mid Devon.



### Households (Census)

source: Census 2011



- Households where occupiers living rent free, 2011
- Households rented from other private owners, 2011
- Households rented from private landlord or letting agency, 2011
- Households rented from other social landlords, 2011
- Households rented from council or equivalent, 2011
- Households in shared ownership, 2011
- Households owned with a mortgage or loan, 2011
- Households owned outright, 2011

Powered by LG Inform Plus

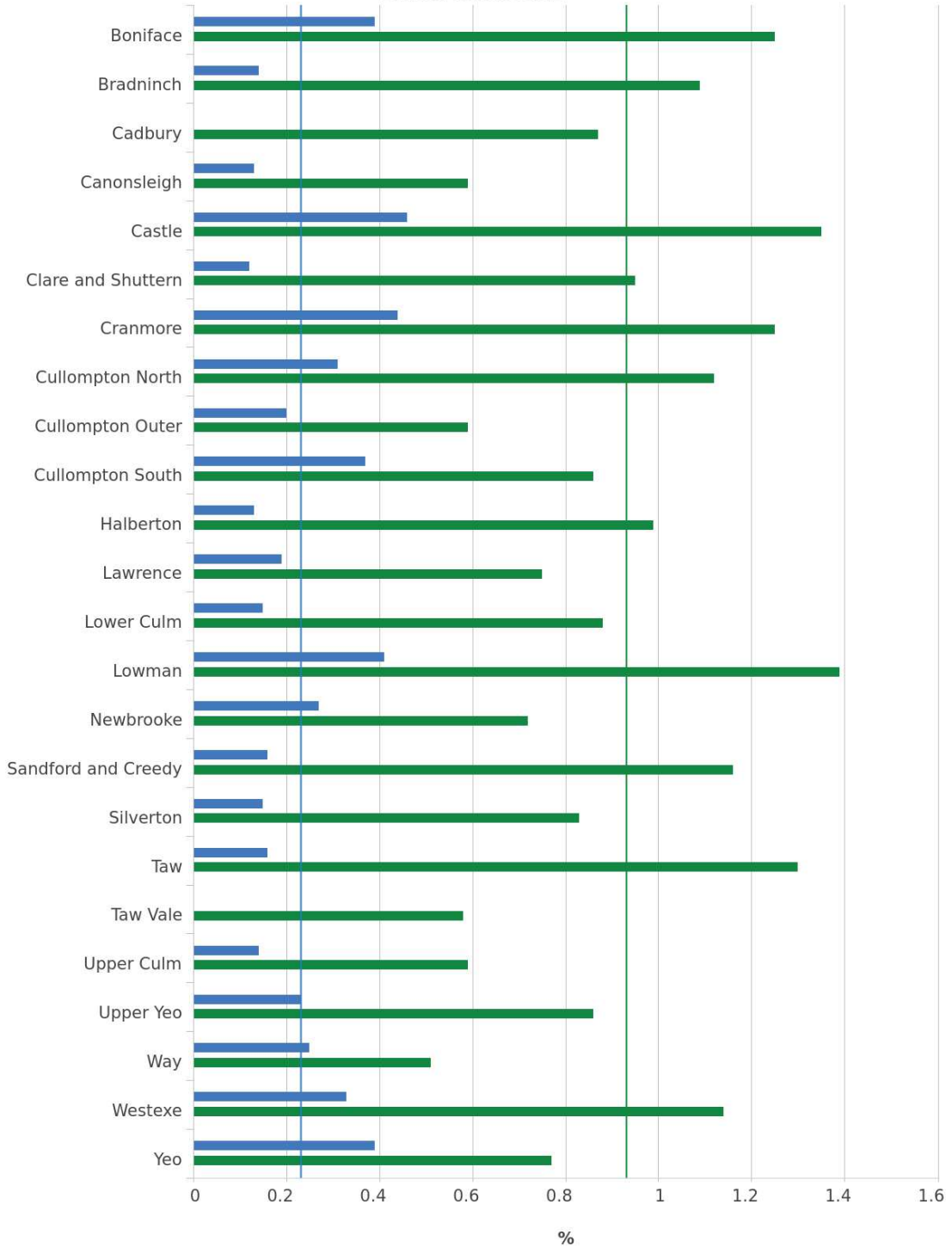
## Employment

Cullompton North ward has the highest percentage of residents in Mid Devon who are long term unemployed or who have never worked.

The bar chart below shows the size of these two groups separately for each ward in Mid Devon against the average for the district.

### Economic activity

source: Census 2011



■ Long-term unemployed (%), 2011   
 ■ Unemployed: Never worked (%), 2011  
— Long-term unemployed (%), Mean for Mid Devon Wards, 2011  
— Unemployed: Never worked (%), Mean for Mid Devon Wards, 2011

Powered by LG Inform Plus

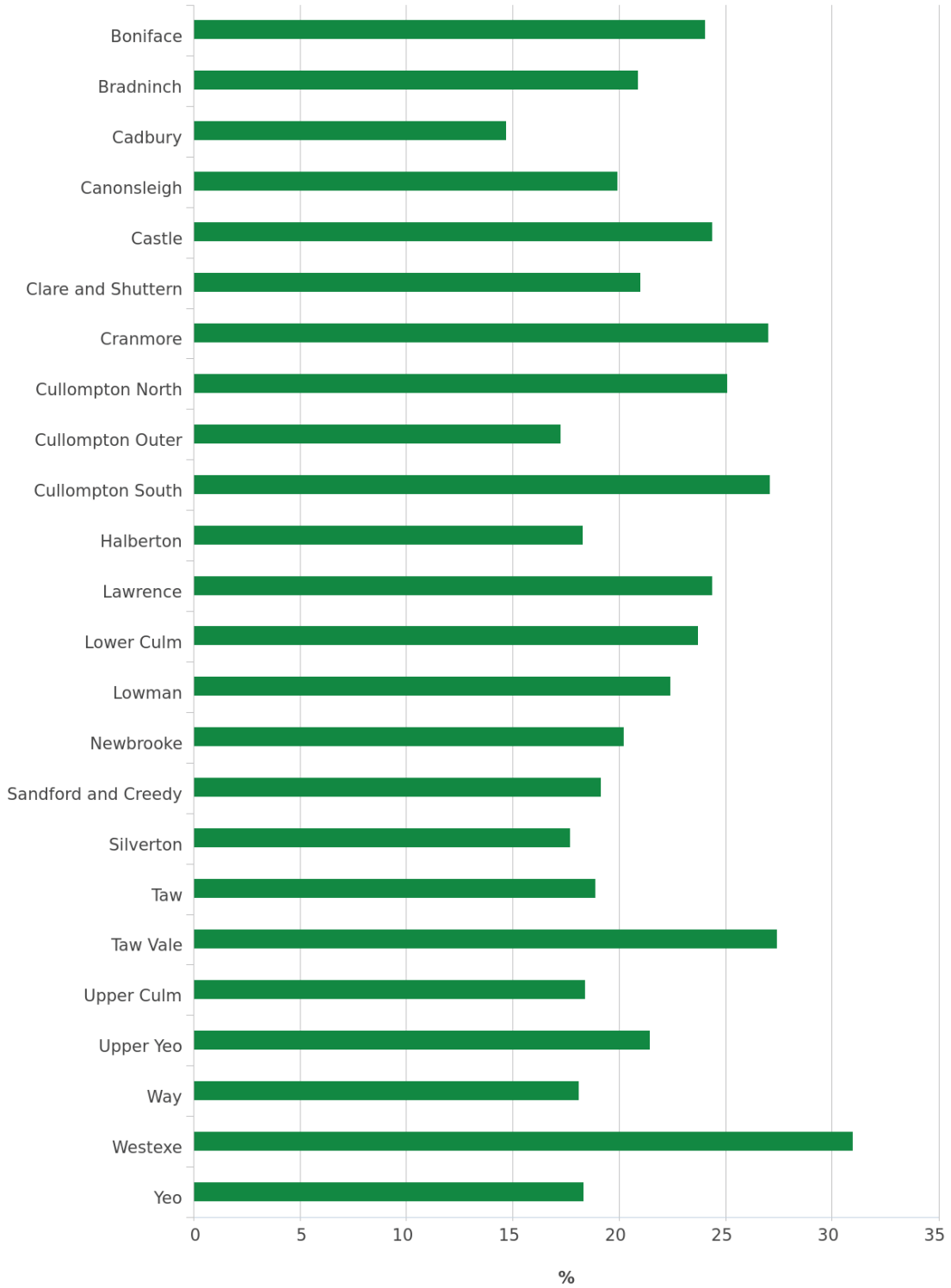
## Education

The 2011 Census recorded the educational achievement of residents; this chart shows the proportion of residents split by each ward reporting to have no qualifications.

Westexe ward has the highest percentage of residents in Mid Devon who have no qualifications (31.01%) compared to 22.70% for Mid Devon as a whole.

### Educational qualifications

source: Census 2011



■ No qualifications (%), 2011

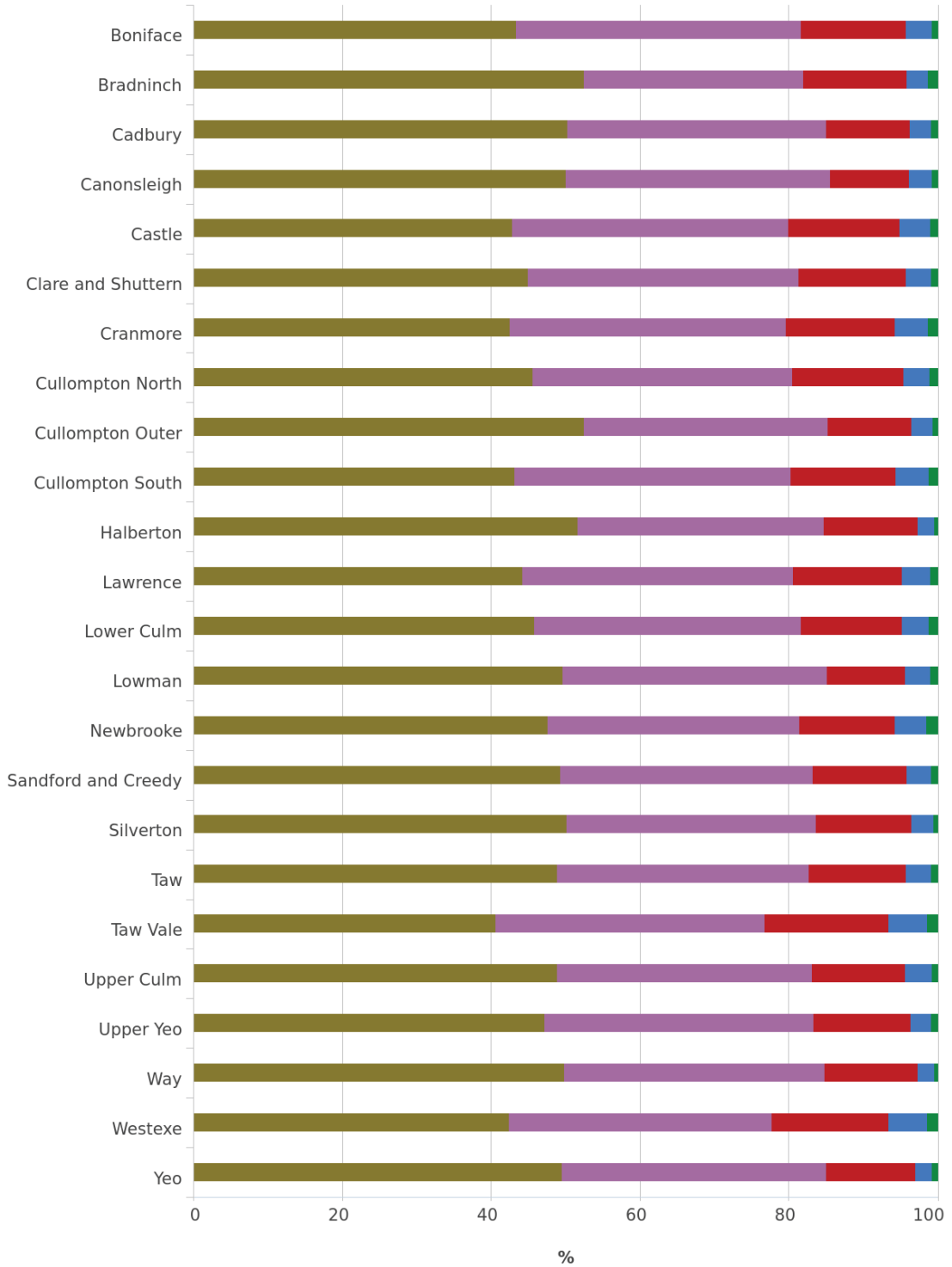
Powered by LG Inform Plus

## Health

This chart shows the general health of residents by each ward in Mid Devon, as self-reported in the 2011 Census. Newbrooke ward has the highest percentage of residents in Mid Devon who report they are in very bad health (1.5%).

### Health of the population

source: Census 2011



■ Very bad health (%), 2011  
 ■ Bad health (%), 2011  
 ■ Fair health (%), 2011  
 ■ Good health (%), 2011  
 ■ Very good health (%), 2011

Powered by LG Inform Plus



## Further information

This report provides a selection of information about Wards within your authority. To get more information and create charts, tables and maps for your own reports, you could consider subscribing to LG Inform Plus. See <http://about.esd.org.uk/subscription-benefits> or contact the LG Inform Plus team at [lginformplus@local.gov.uk](mailto:lginformplus@local.gov.uk) with any queries. Subscriptions go towards supporting the sustainability of the local government information standards and LG Inform Plus tools for the benefit of the whole sector.

## References

This report was generated using data from:

[Nomis; mid-year population estimates](#)

[Office for National Statistics; Census 2011](#)

[Office for National Statistics; UK Standard Area Measurements \(SAM\)](#)