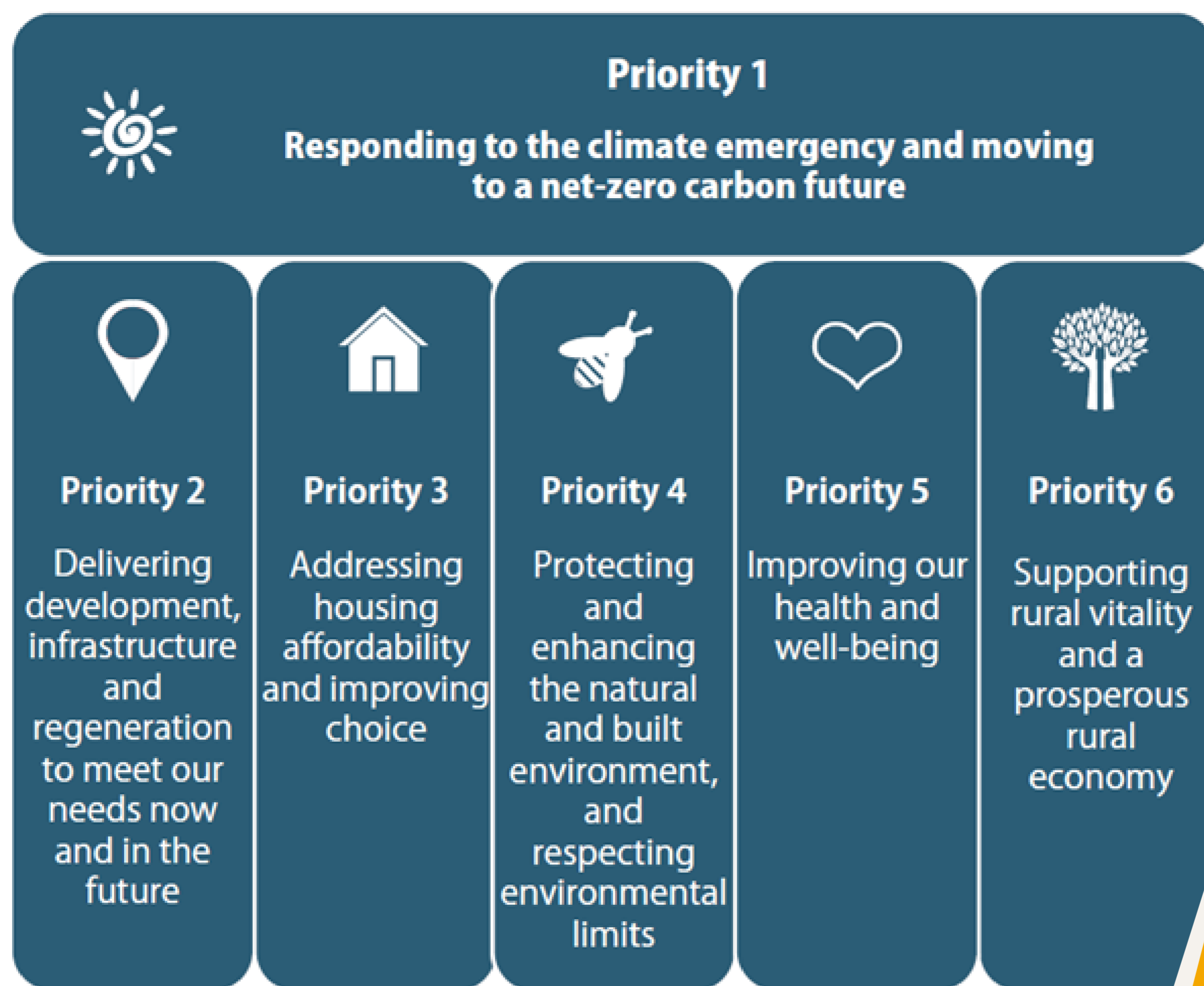


About the Plan Mid Devon Issues Paper

The Plan Mid Devon Issues Paper sets out what we believe should be six top priorities for Plan Mid Devon. It explores a range of themes and matters that are relevant to our towns, villages and rural parts of the district.

While each priority is interrelated and important in its own right we have placed the need to respond to the climate emergency and moving to a net-zero carbon future as the overarching matter to be addressed. This is since many of the actions needed to tackle the climate crisis are also key to helping us achieve the five other priorities identified as necessary for a sustainable, resilient and prosperous Mid Devon.



Please take this opportunity to let us know what you think, and help us write a new 'vision' for Mid Devon.

The Issues Paper includes 58 questions. These cover a range of themes:

- Access to new technologies and digital communications
- Meeting housing needs
- Supporting our businesses and jobs
- Infrastructure and how we travel
- Our natural and historic built environment
- Improving our health and well-being
- How our places look and are used
- Our towns and their environs
- Our rural areas and villages
- Culm Garden Village
- Proposals at Junction 27, M5 Motorway
- A sustainable distribution of development across Mid Devon

